

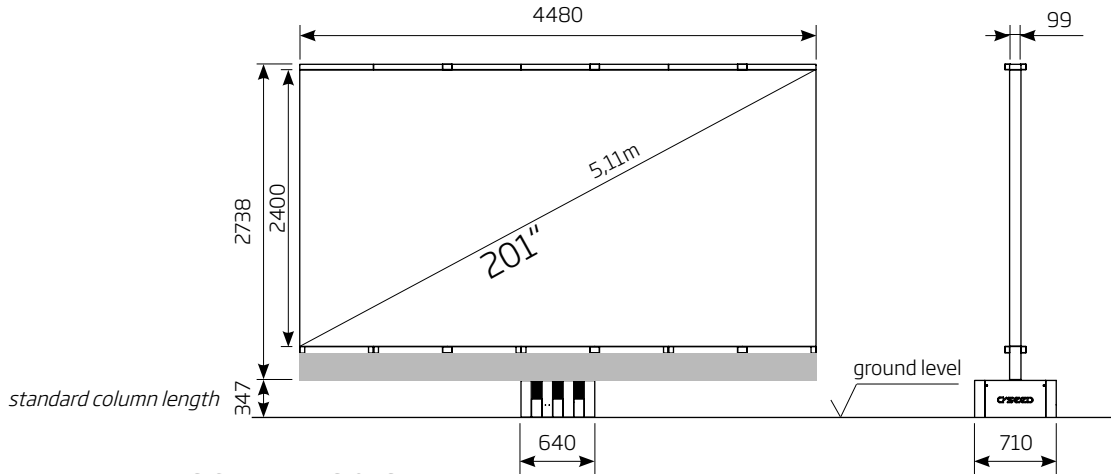


IMPLEMENTATION CONCEPT

C SEED 201 HLR

C/SEED

THE UNFOLDING TV



PHYSICAL DIMENSIONS TV

LED TV size (diagonal)	inch/mm	201 / 5105
LED TV size (width)	inch/mm	176.4 / 4480
LED TV size (height)	inch/mm	94.5 / 2400
Standard LED screen (depth)	inch/mm	3.9 / 99
LED TV area	sq.ft./m ²	116.3 / 10.8
LED TV system weight	kg	2850

TV SYSTEM

Brightness	nits	4,000
Pixel Pitch	mm	1.90
Processing Depth	bit	16 per color
Color Spectrum	colors	64 billion
Refresh Rate	Hz	3,840
Lifespan LED	h	100,000
Contrast Ratio		7,000:1
Colour Temperature	k	6,500 - 10,000
Viewing Angle- Horizontal Vertical	degrees	160 160
LED fixings		back - service
Operating Temperature range		C°: -20 to +45 F° -4 to +113
Broadband speaker peak out	W	4 x 250
Broadband speaker frequency range		40 Hz - 22 kHz

INPUT / OUTPUT

Video Input		HDMI2.0/DP1.4
Serial In/Output		2 x USB
Audio Output		pre-amp, 9.2, independent sub
Network Connection		1 x RJ45

OPERATION

Power Supply LED screen	Standard	3 x 400V+N+PE/32A/50-60Hz
	High-Leg-Delta	3 x 240V+PE/60A/50-60Hz*
	Single-Phase/Split-Phase	240V/120V+PE/110A/50-60Hz**
Input Power max typical	W/m ²	880 230
Power Consumption max typical	kW	19 5.7

* transformer required | ** phase converter and transformer required

PHYSICAL DIMENSIONS STOWED POSITION

C SEED Box (Length)	inch/mm	196 / 4975
C SEED Box (Width)	inch/mm	51.6 / 1310
C SEED Box (Height)	inch/mm	35 / 890

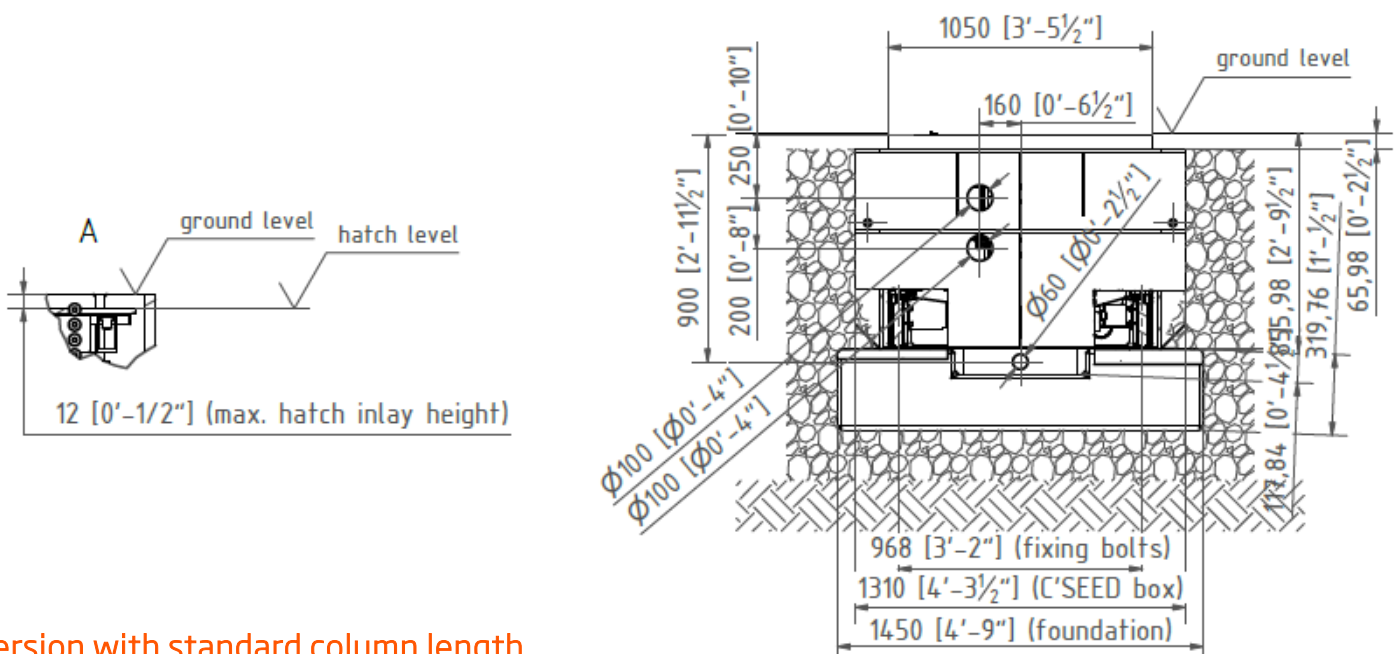
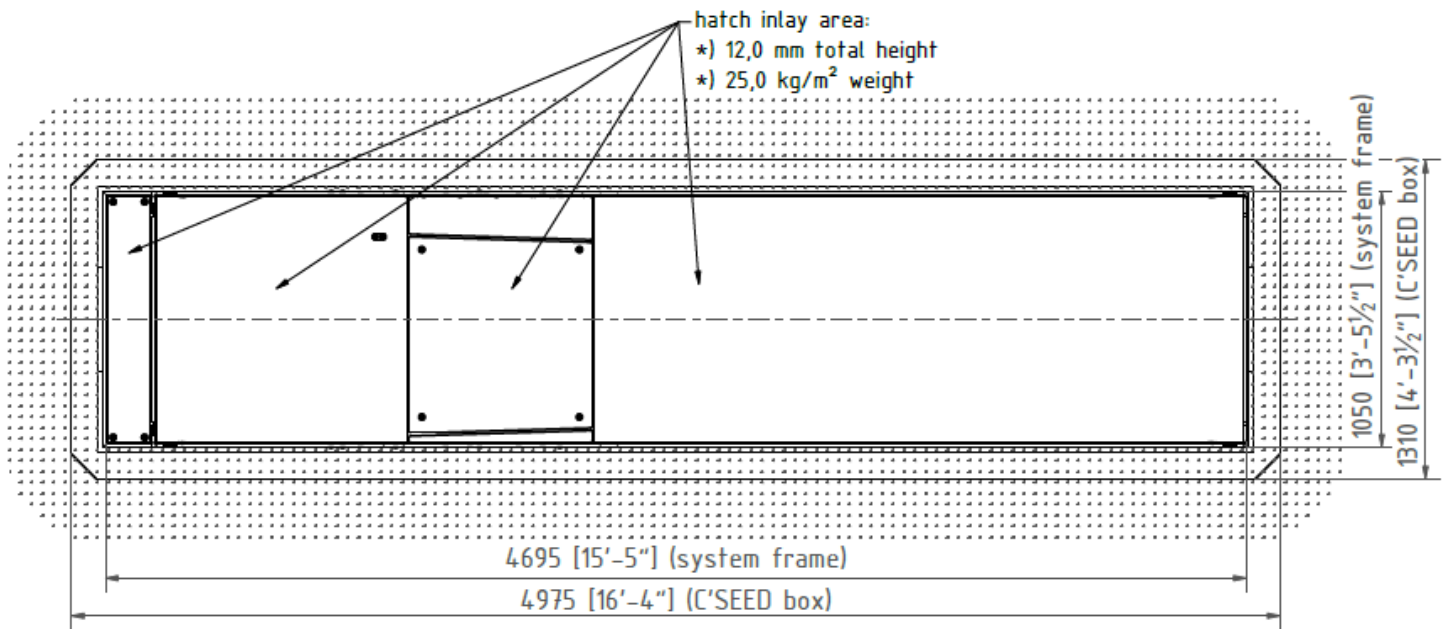
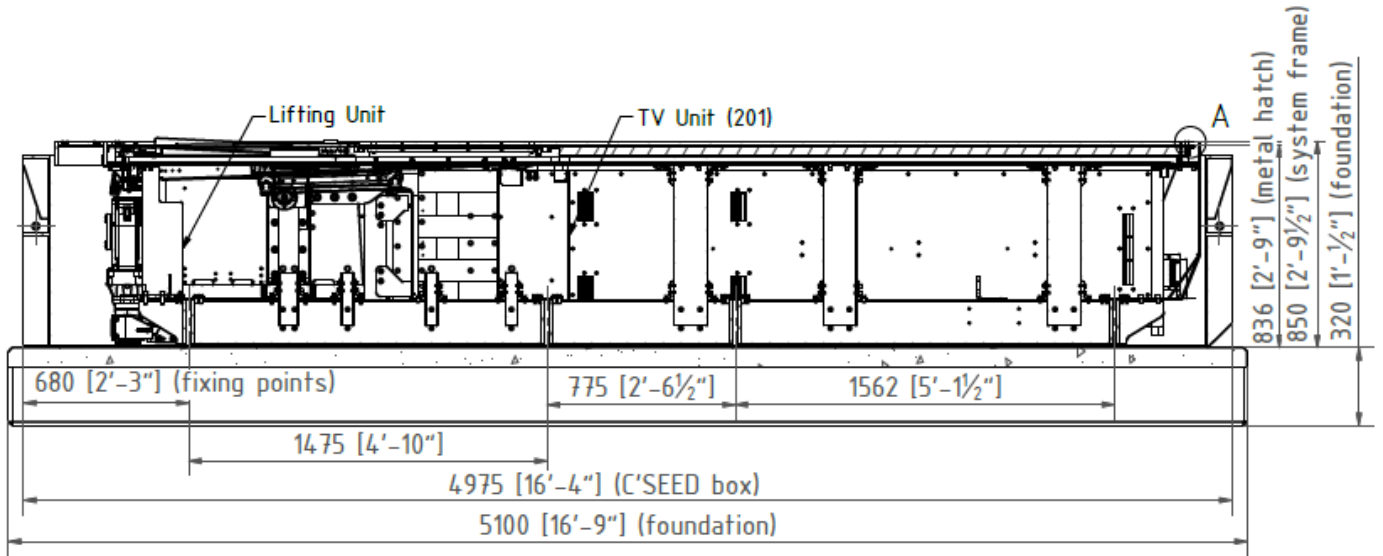
SPECIFIC FEATURES

Automatic TV Cover 9.2 AV-Receiver Remote Control 4K LED HDR10+ Controller
TV-Rotation Angle: 90° left & 180° right OR 180° left & 90° right

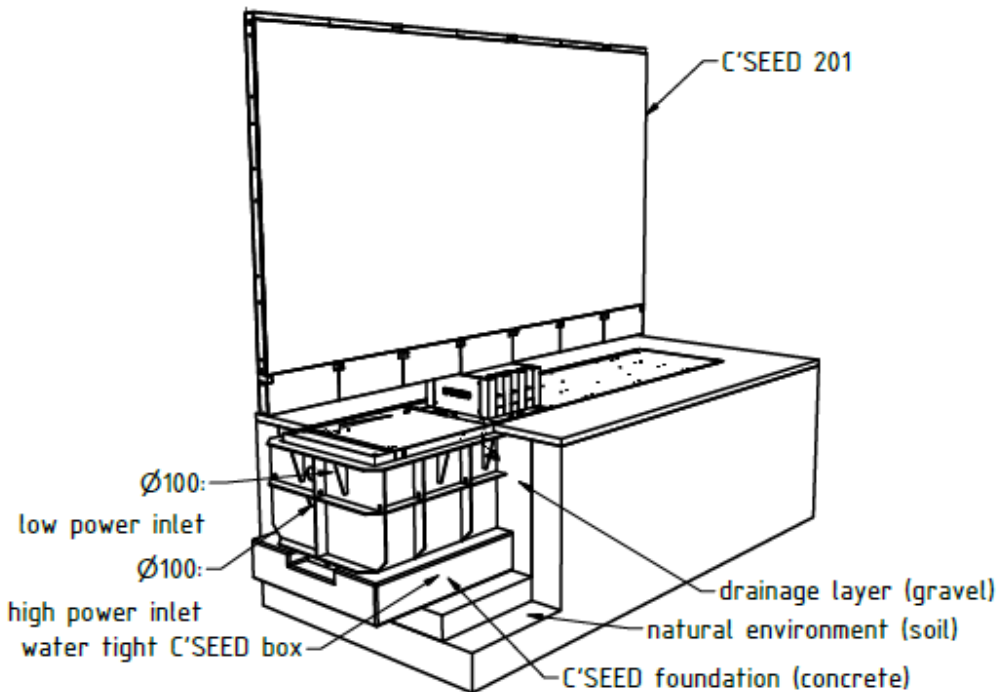
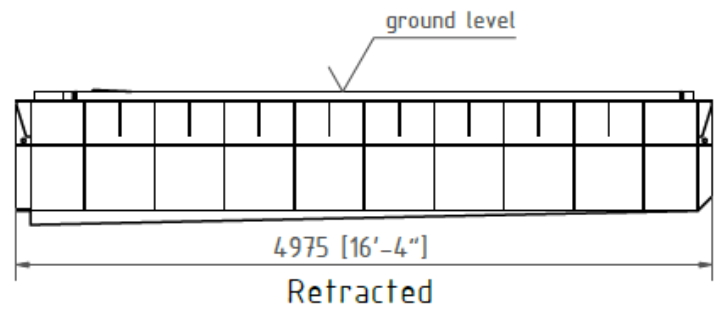
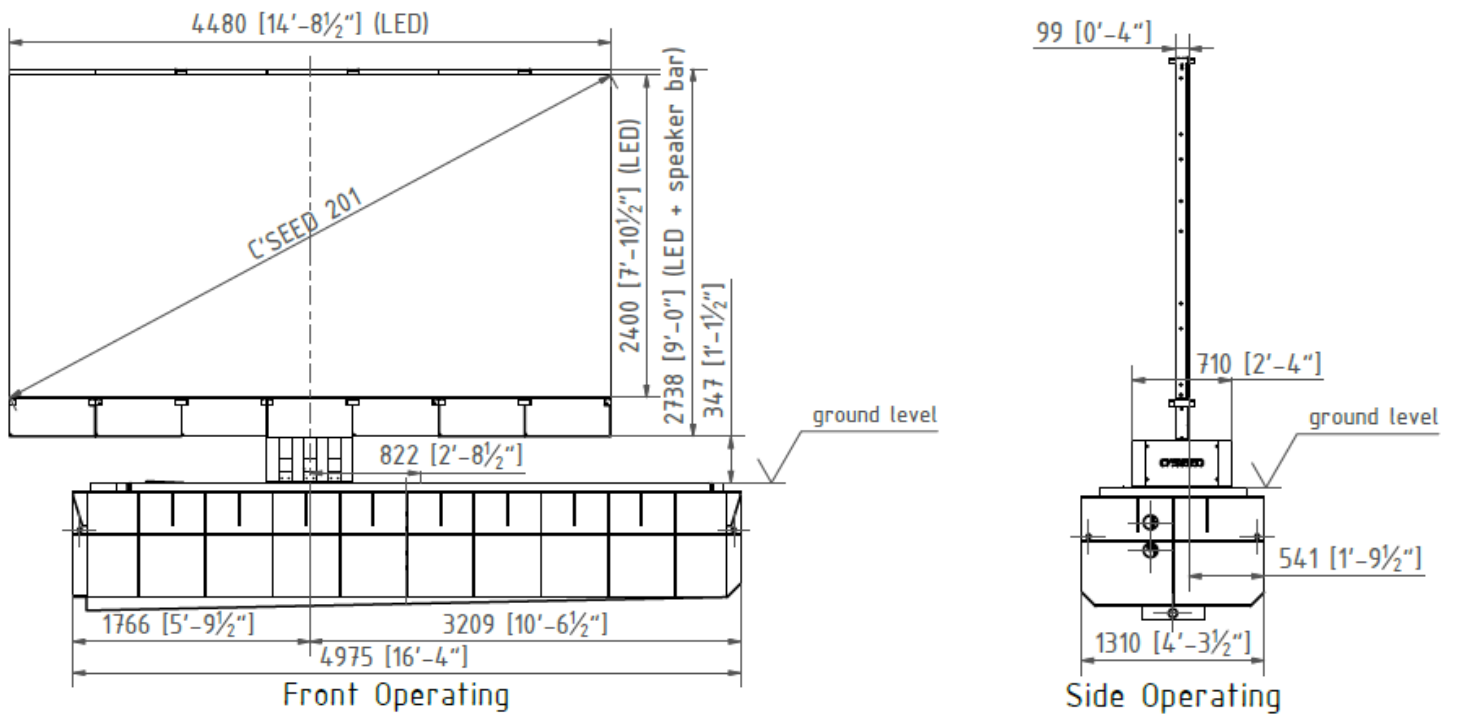
OPTION

Extended Center Column to 850mm/33.5" clearance available

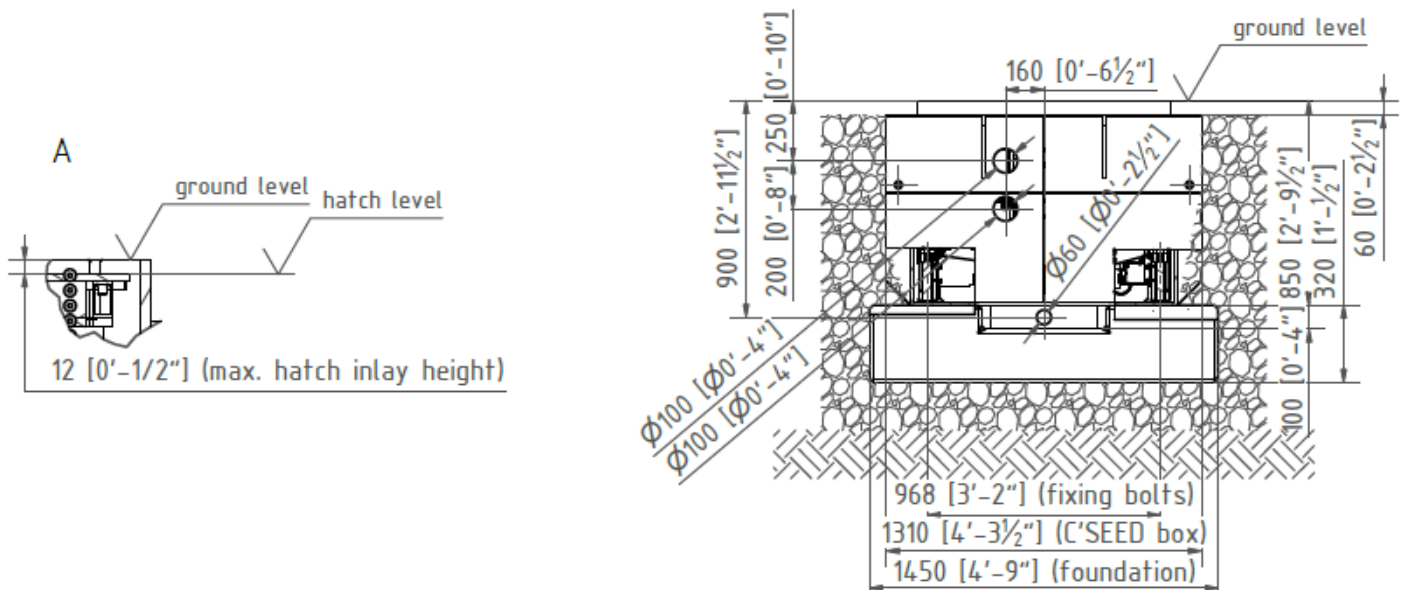
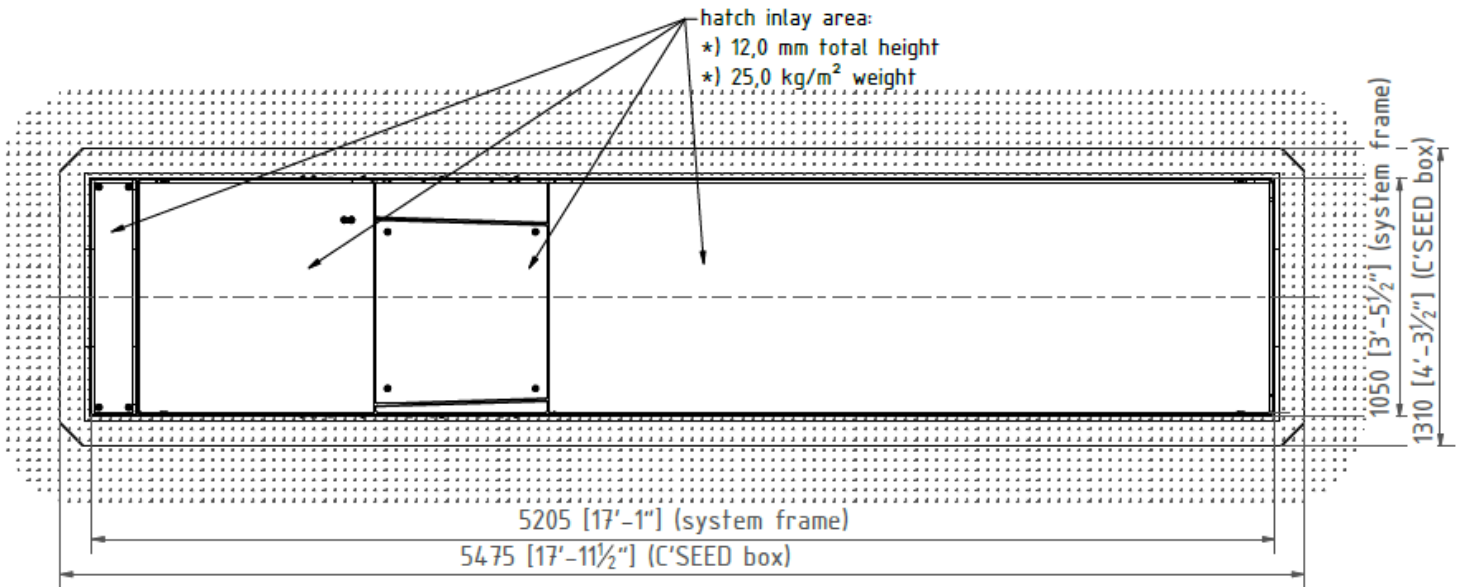
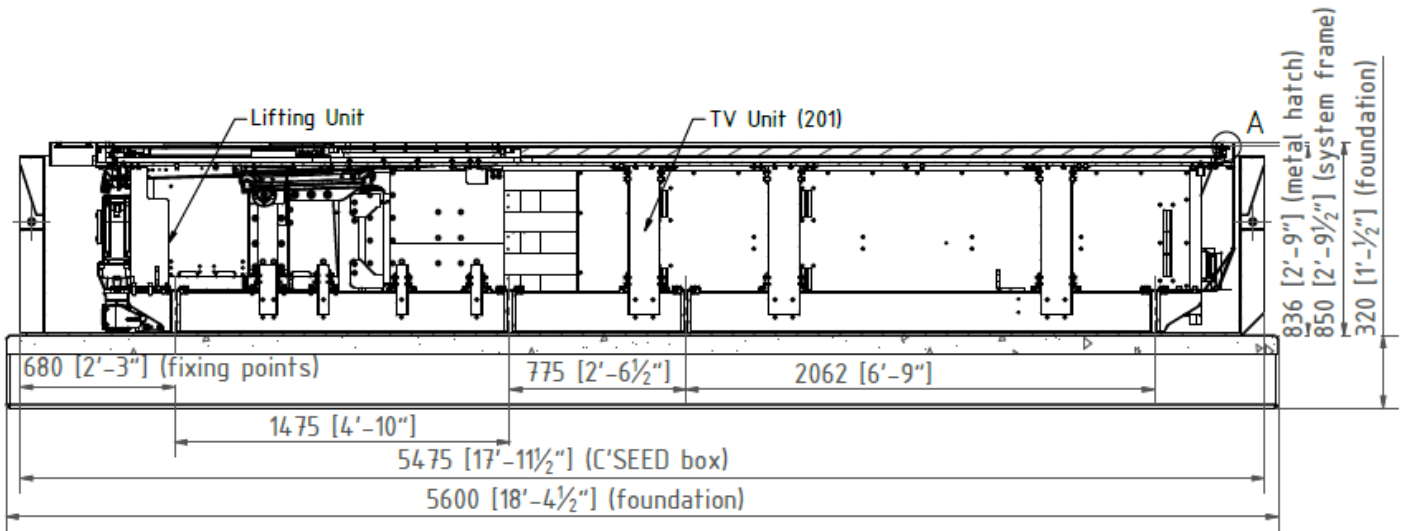




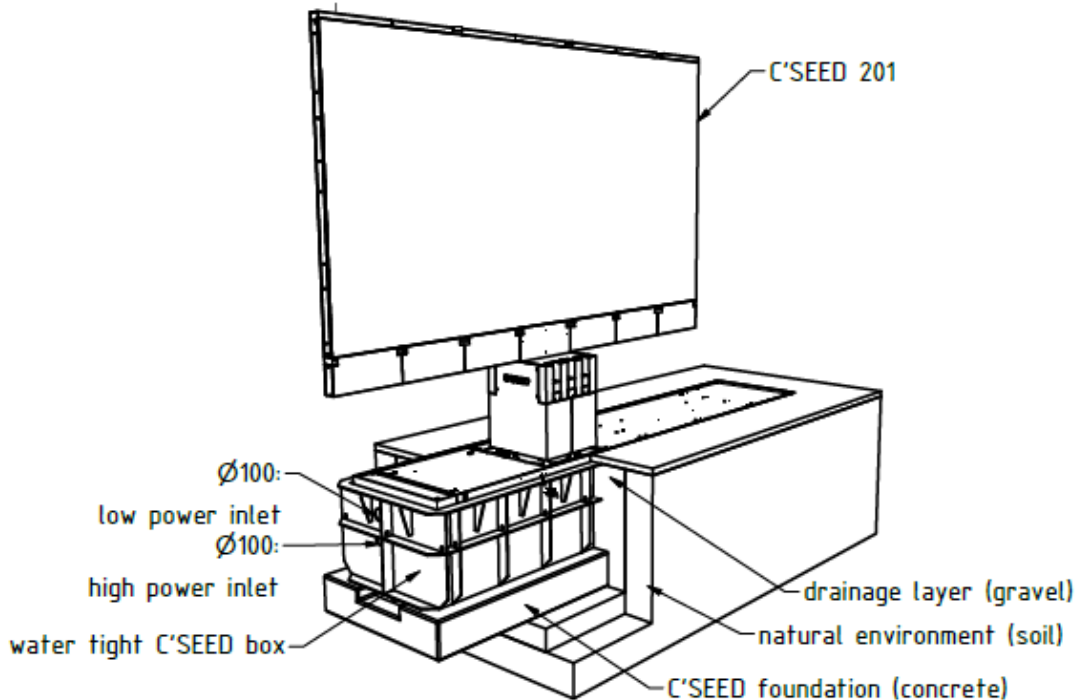
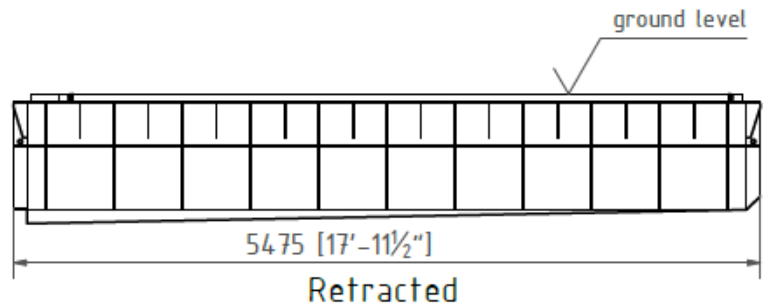
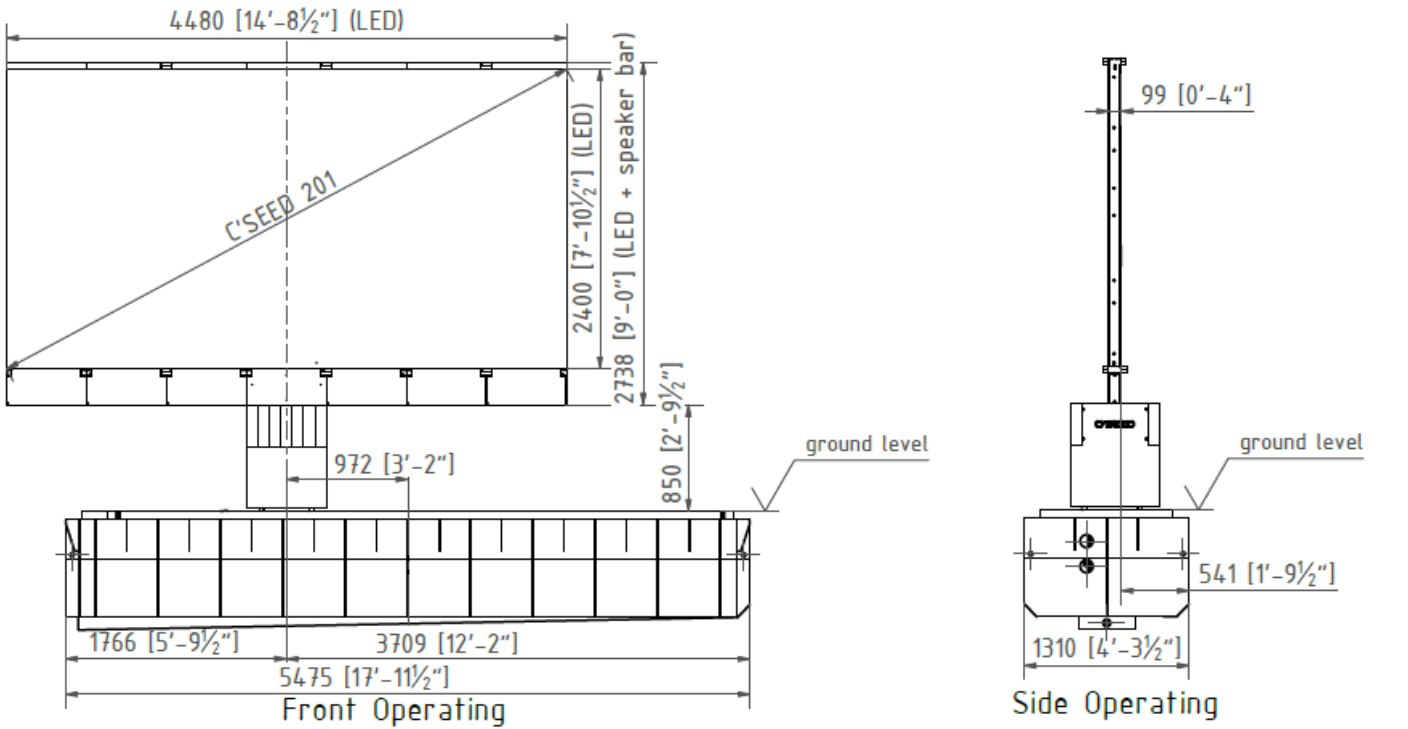
Version with standard column length



Version with standard column length



Version with extended column length



Version with extended column length

TV CONCRETE FOUNDATION

- 5100x1450x320 mm | 201x57.1x12.6 inches | LxWxD with standard column length
 - according to final TV concrete foundation plan
- Earthing of the TV well (min. 3 times)
- Drainage - Natural drainage directly from the sump pit

EQUIPMENT CLOSE TO THE TV

- Emergency Stop Button
- Confirmation Panel
- HMI Touch panel for wired system control
- Weather Station Location near the TV
- Dehumidifier device (provided by C SEED)

TECHNICAL ROOM

max. 100m | 320 feet to TV system

***/**Transformer | **Phase Converter** (provided by owner of the venue)

- Requested Output: 3x400V+N+PE | 32A | 50-60Hz AC (3~)
- ***/**Transformer:** TEMCo Euro-Plus Transformer TT1003 - 15 kVA
<https://temcoindustrial.com/temco-euro-plus-trade-transformer-tt1003-15-kva/>
- ****Phase Converter:** 10HP 240V Digital Phase Converter - Phase Perfect® <https://www.phaseperfect.com/original/240-volt/pt010/>

UPS | uninterrupted power supply

- 3x400V+N+PE
- 320x700x840 mm | 12.6x27.6x33.1 inches | WxHxD
- Ventilation on backside (300 mm | 12 inches free space must be reserved)
- High power transformer needed (provided by owner of the venue)

Control Cabinet

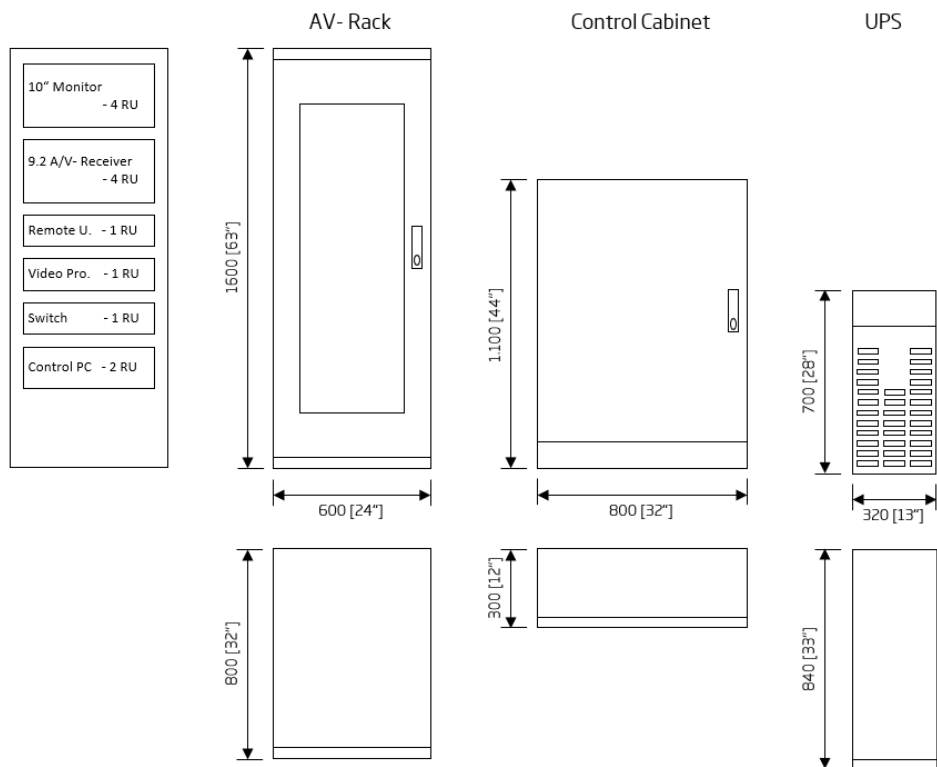
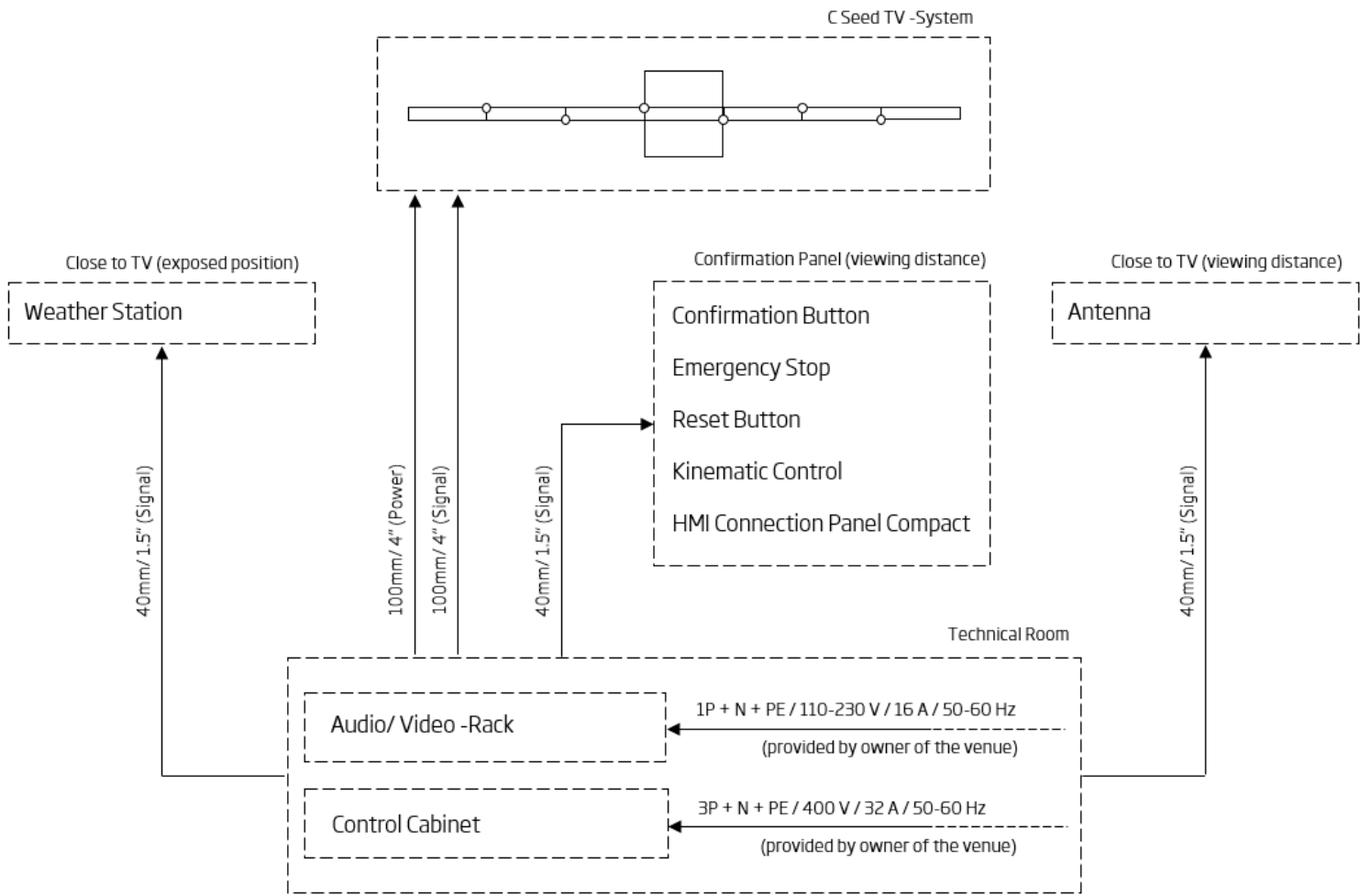
- 800x1100x300 mm | 32x44x12 inches | WxHxD
- Feed cable with 5 pins or 4 pins plus additional earthing
- Connector on left side (200mm | 8 inches free space must be reserved)
- Power protection with a "fault-current circuit breaker AC/DC sensitive and electric frequency converter capable"

AV-Rack

- AV-Rack with 32RU - 600x1600x800 mm | 23.7x63x31.5 inches | WxHxD
- SAT | Video | TV signals to be connected via HDMI inputs
- Internet connection as of beginning of installation (permanent!)

CABLING DUCTS AND CONDUITS

- 1 tube with diameter 100 mm | 4 inches (not less)
 - Located between electricity cabinet and TV-System (high power connection)
- 1 Tube with diameter 100 mm | 4 inches (not less)
 - Located between AV rack and TV-System (data cables from MMS)
- 1 Tube with diameter 40mm | 1 ½ inches (not less)
 - Located between weather station and control cabinet (weather station data)
- 1 Tube with diameter 40 mm | 1½ inches (not less)
 - Located between Control Cabinet and Confirmation Panel
- 1 Tube with diameter 40 mm | 1½ inches (not less)
 - Located between Control Cabinet and Antenna
- 1 Tube with diameter 40 mm | 1½ inches (not less)
 - Only if Control Cabinet and AV-Rack are not in same room



**SERVICES PROVIDED BY AND
AT THE EXPENSES OF THE OWNER OF THE VENUE**

- Power Supply: Standard 3 x 400V+N+PE/32A/50-60Hz
 High-Leg-Delta 3 x 240V+PE/60A/50-60Hz*
- Single-Phase/Split-Phase 240V/120V+PE/110A/50-60Hz**
- Internet connection at the AV - Rack as of beginning of the installation
- WIFI | WLAN at the venue as of beginning of the installation
- Access for heavy duty excavator, crane and trucks to TV well
- Excavation for the construction of the TV concrete basin according to ground-structure
- Cabling ducts & conduits for TV system according C SEED electrical conduits plan (project specific)
- Cables and cable installation according to C SEED electrical cable plan (project specific)
- Sump pump, conduits & cabling for it and connections to power supply and drainage
- Assemble ethernet connectors and provide test protocols
- Sat | video | TV signals at the AV-Rack
- Crane on site approximately 10 hours in total (min. 4.5 tons & 5 meters of height)
- Connecting Power Supply by local electrician
- Electrical test protocol according to international standards of all cables must be provided to C SEED prior installation

* transformer required | ** phase converter and transformer required

SERVICES PROVIDED BY C SEED

- Site visit - meeting with construction company, civil engineer etc.
- Standard plan for construction of the TV well for local civil engineer
- Project related engineering package
- Coordination with local electrician
- Coordination with local sat | video | TV professional
- Implementation, programming & testing of the C SEED TV
- TCP/IP control protocol for home automation
- Operation training for technical staff of the venue
- Handover & Acceptance Protocol

Contacts

Owner representative _____

Construction company of the venue _____

C SEED Project manager _____