

With the :RotoCam ELEMENT ONE has now designed an extraordinary camera especially for the FOLD! Its rotatable optics can be perfectly adjusted to the user and the image section; normally, it only needs to be adjusted once.

“In a successful meeting, all the senses play well together”

A meeting is always about hearing and being heard, but also about seeing and being seen. For videoconferences in large meeting rooms or at presidium seats, the :RotoCam has now been developed as an option for the FOLD! The 8 MP moving camera is attached to the top of the monitor and is connected via USB.

The correct alignment of the camera on a notebook or tablet can degenerate into a recurring game of patience – the :RotoCam usually only needs to be preset once according to the programmed maximum set-up angle of the FOLD! As a rule, the camera is then automatically switched to the speaker. This not only ensures an optimal image detail, but also saves the discussion participant time and nerves. For more privacy in certain situations, the camera can be turned away.

ELEMENT ONE

Multimedia GmbH

Zum Murgdamm 5

76456 Kuppenheim

Germany

Fon: +49 (0) 7222 966 54 20

Mail: info@element-one.de

www.element-one.de

A large, white, sans-serif text 'FOLD! 173 :RotoCam' is centered at the bottom of the page. The background of this section is a dark blue gradient. Above the text, a portion of a monitor is visible, showing a close-up image of water droplets on a leaf, which is being captured by the :RotoCam camera mounted on top of the monitor.



Perfect impression | Perfect operation

The FOLD! impresses with its unique look and innovative movement mechanism.

Installed in the perfect position in the table, it also guarantees ergonomically ideal use of the touchscreen. The result: Today's **most effective presentation and communication** at the table and in the meeting room.

- Most compact housing dimensions
- Innovative, award-winning monitor movement FOLD! with 8mm display
- 2mm anti-reflective protective screen
- USB-camera module with digital microphone and auto functions. Camera tilt angle manually adjustable. Constantly sharp images thanks to autofocus. Maximum detail with 8 MP (3,264 x 2,448 pixels).
- Brushed stainless steel for mounting frame and closing flap
- Aluminum monitor housing
- DirectAxleAccess for manual retraction and extension - ideal for service and maintenance purposes
- HDMI HDCP compatible; FullHD resolution
- Total of two precise stepper motors 12V, for display and tilt function.
- Low power consumption, typ. 15W
- Electronic clamping protection
- Mechanical protection in case of maloperation
- HydraulicSaveSystem against mechanical malfunction
- 5 years limited warranty



FOLD! 173 :RotoCam is optionally available with 4K / UHD resolution

FEATURES

FOLD! 173 :RotoCam

TECHNICAL DATA

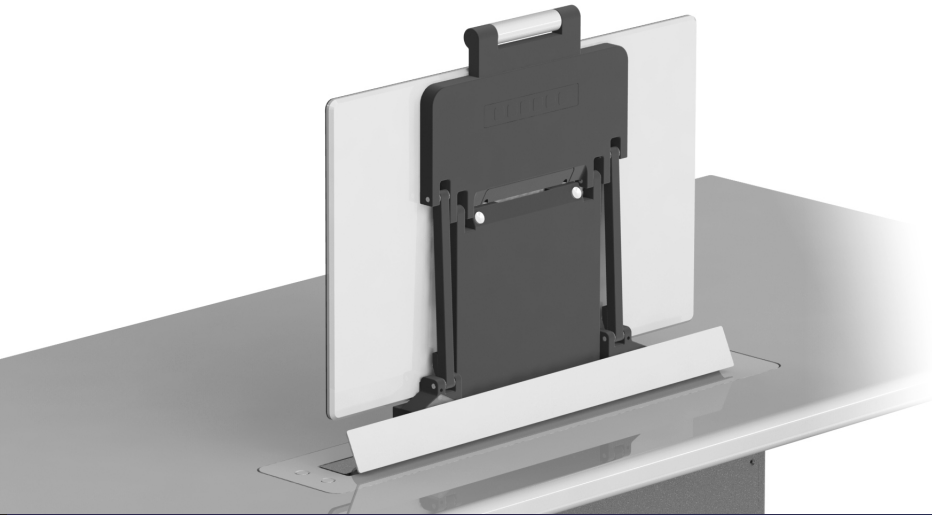
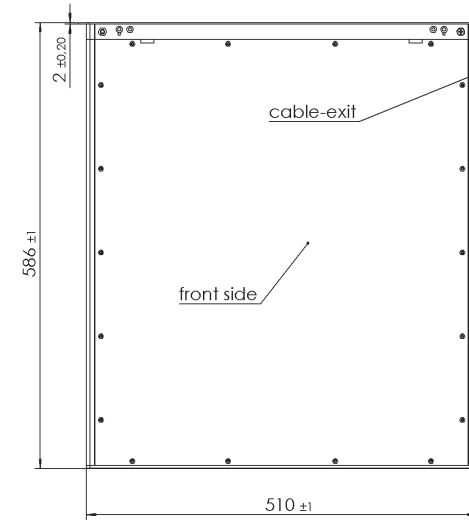
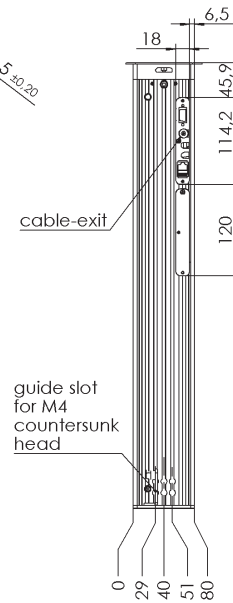
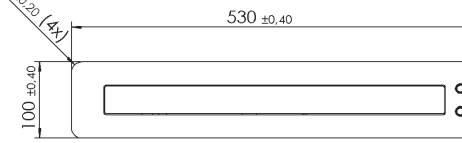
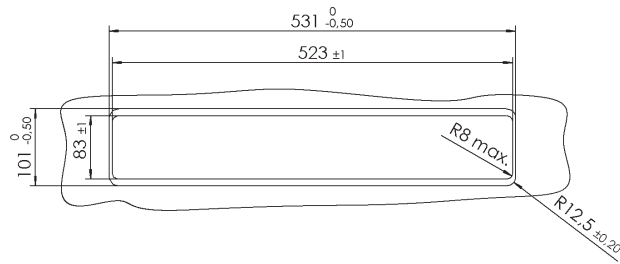


Product Specification



Art.No.	200-173-T IP FOLD ROTOCAM	Screen size:	17.3" (16:9)	Camera / Mic:	USB-camera module with digital microphone and auto functions. Camera tilt angle manually adjustable. Available for CONVERS FOLD screens - Constantly sharp images thanks to autofocus (10 cm to ∞). Maximum detail with 8 MP (3,264 x 2,448 pixels).
Type	CONVERS 173 FOLD FullHD ROTOCAM	Resolution:	1,920 x 1,080 - Full HD, 262,144 colors		
Function	Vertically movable monitor; furniture-integratable 17.3" monitor system with electromechanical drive / lifting system of the integrated 8mm slim aluminum display; automatic display tilt 15°-90°; inverse vertical movement; integrated USB camera module with digital microphone and many auto functions. Camera tilt angle manually adjustable. control via push-button on the unit or via remote control interfaces (TCP/IP or contact); manual extension function DirectAxleAccess for service, maintenance, installation purposes. Low noise <40dB; two 12 V stepper motors with precise synchronization - for simultaneous extension when using multiple monitors and microphones; independent electromotive adjustment of the tilt angle - both central presetting via remote interface and individual adjustment by user.	Brightness:	300 cd/m ²		
		Contrast:	(typ.) 700:1		
		Viewing angle:	Horizontal 160 ° / Vertical 160 °		
		Viewing area:	381.888 (v) x 214.812 mm		
		Pixel size:	0.1989 x 0.1989 mm		
		LED lifetime:	up to 15,000 hours		
		Mass:	12.5 kg		
		Dimensions:	530 x 100 x 586 mm (LxWxD)		
		Power consumption:	typ. 15 Watt		
		Pwr. consumpt. monitor:	OFF: 0.12 watts, Sleep: 0.60 watts, ON: 5.6 watts		
		Tilt angle:	15°-90°		
		Monitor extension height:	308mm at 90° / 154mm at 15°		
		2x stepper motors:	Separate extension function monitor, monitor inclination		
		Video interface:	HDMI, Displayport *, DVI **; HDCP compatible		
		Remote control:	9-pin d-sub serial and RJ45 TCP/IP for device control & adjustment of extension parameters & firmware update (E1 cable & software required)		
		Scope of delivery:	Power Supply - Input: 100-240V~, 50/60Hz. 1.5A; Output: 12V 5.A 60W MAX (cable length DC ~140cm) IEC cable 1.5m / under mount bracket CONVERS-2 Universal / 1 pair		
Material	Monitor: Milled aluminum, powder coated, 2 mm anti-reflective protective glass Mechanics: Anodized aluminum, stainless steel; Mounting frame and cover flap: stainless steel, brushed Camera: Aluminum, carbon fiber, PLA.				
					QXGA (3,264H*2,448V pixels) Size of sensor: 1/3.2" inch CMOS Digital Image Sensor 8MP sensor Output data format: YUV2/MJPEG USB Output. Optical filter: Infrared cutting filter 650nm+/-10nm Focal length, Fno.: f=3.85mm,F2.2 Fov(D): 72° Distortion: <1.5% Focus range: 10cm to Infinity Auto Focus Type Power-supply voltage: USB 5V Max. frame rate: YUV2: 24fps@VGA, 24fps@SXGA, 1.5fps@8M ,MJPEG: 24fps@VGA, 24fps@720P, 24fps@1080P, 15fps@8M Interface type: USB 2.0 DSP Uses the high performance digital processing chip Audio: Digital Mic Power source: Uses USB BUS Power System support: Exempts the actuation, supports windows 8/7, Windows Vista, Windows XP, Mac OSX 10.4.8 or later, and Linux Kernel V2.6 and above with UVC driver

* optional, additional interface | ** optional, instead of HDMI



Dimensions



We'd be delighted to offer our expertise in the planning and selection of the right solution for your needs. If required, we can send further technical drawings, detailed photographs, material samples and, of course, demo devices – perfect to handle and try out.

Simply call us on +49 (0)7222 96654-20

Or send us an e-mail at: info@element-one.de

ELEMENT ONE

Multimedia GmbH

Zum Murgdamm 5

76456 Kuppenheim

Germany

Fon: +49 (0) 7222 966 54 20

Mail: info@element-one.de

www.element-one.de