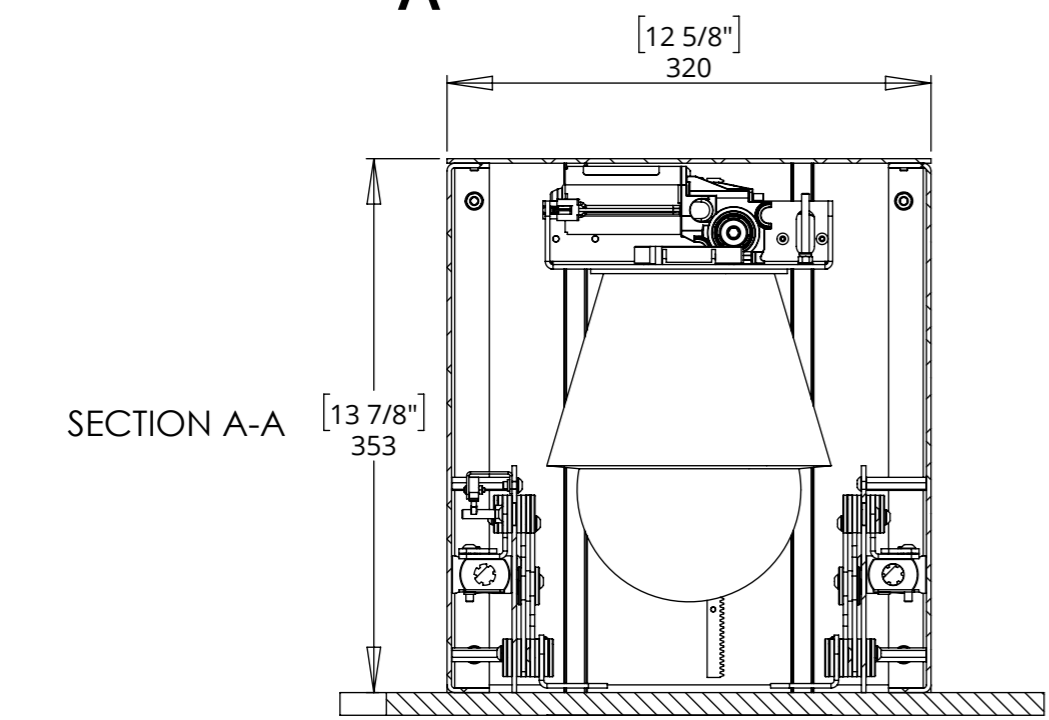
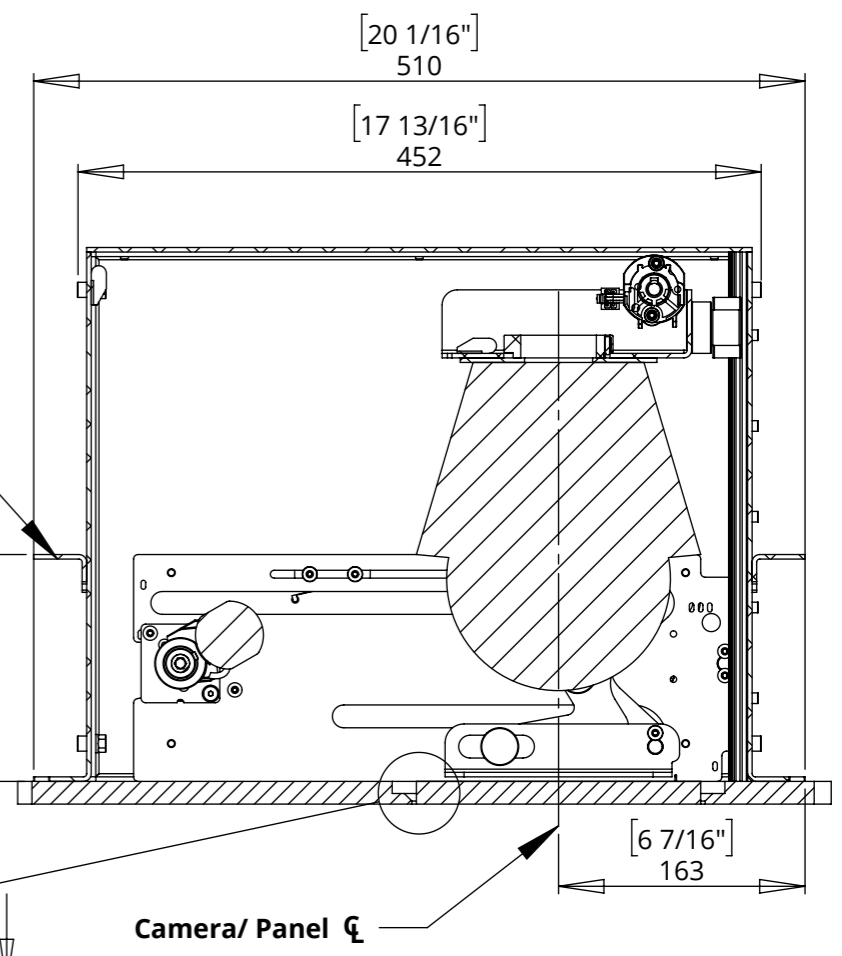
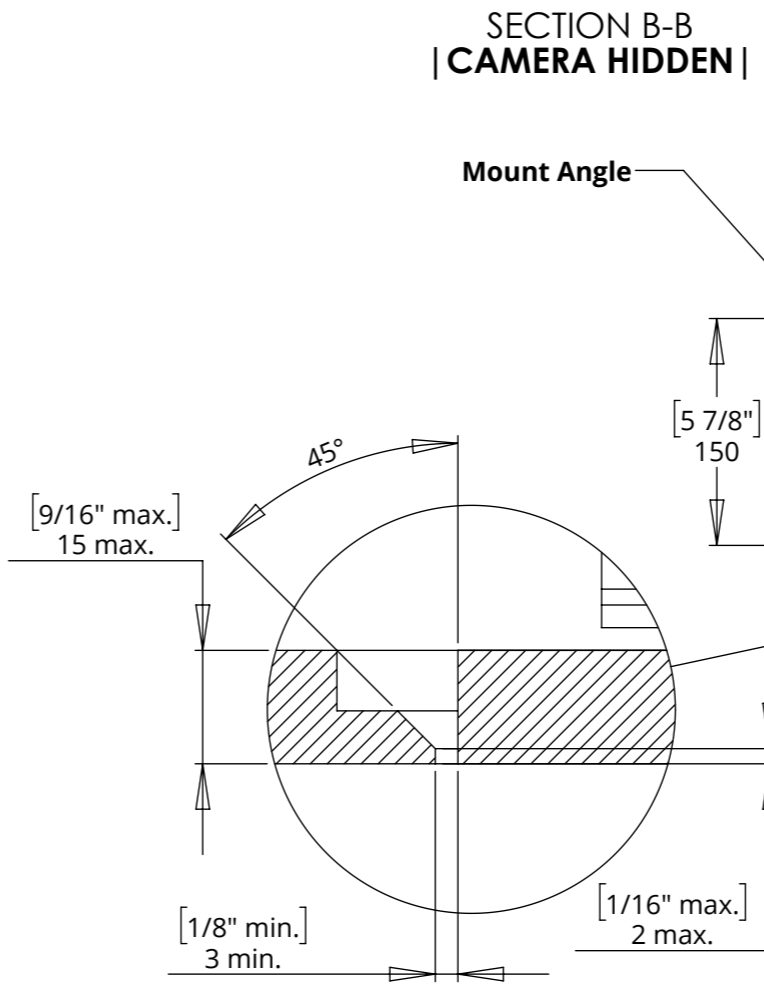
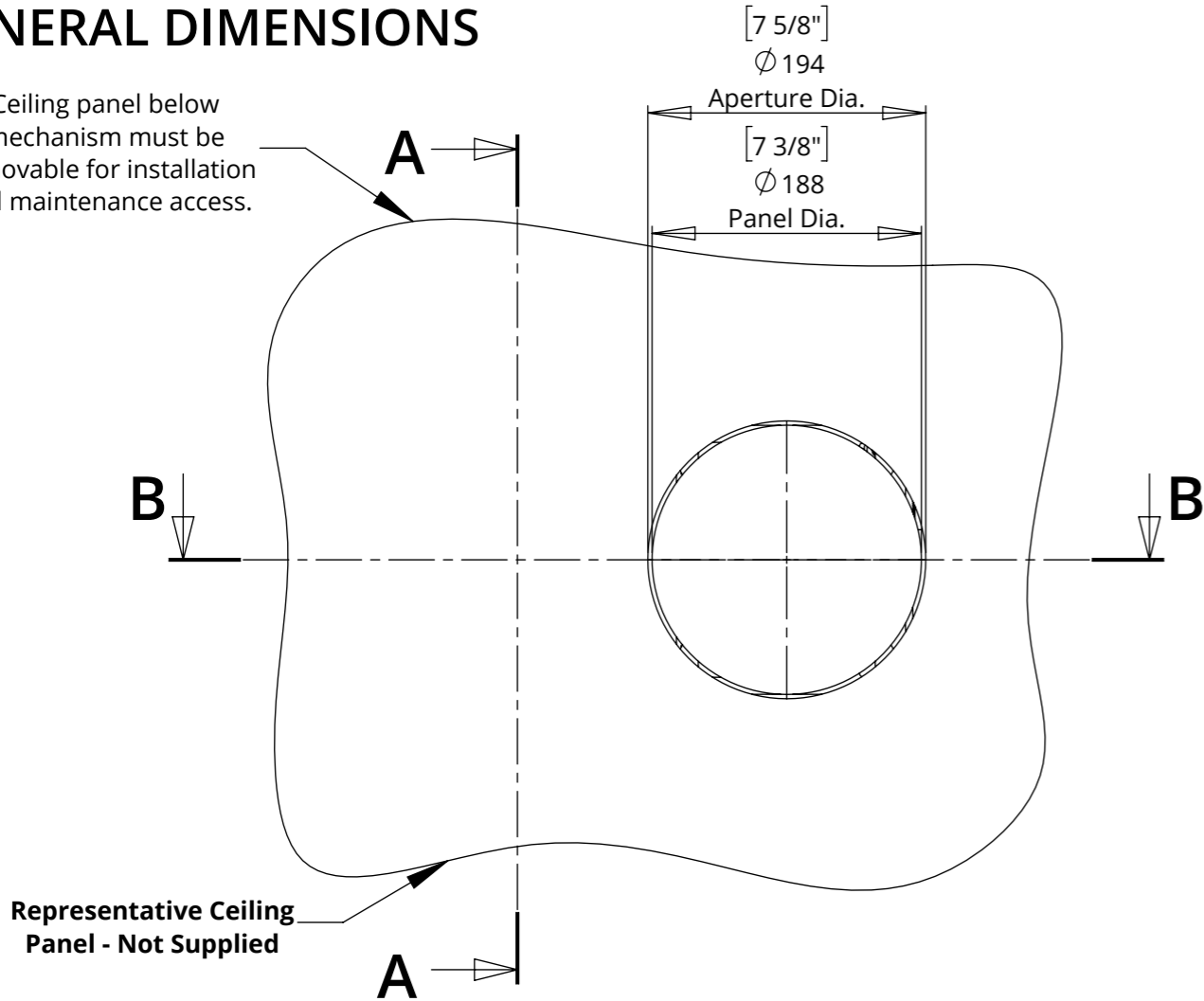


DCL-M

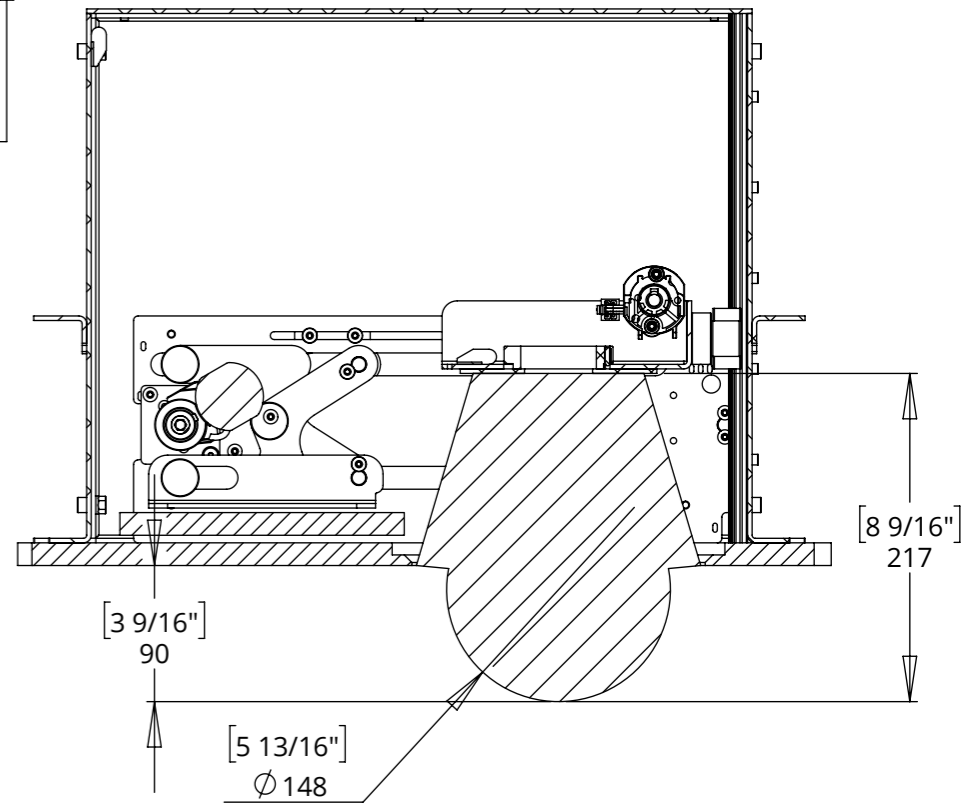
AXIS P5655-E CAMERA LIFT

GENERAL DIMENSIONS

Ceiling panel below mechanism must be removable for installation and maintenance access.



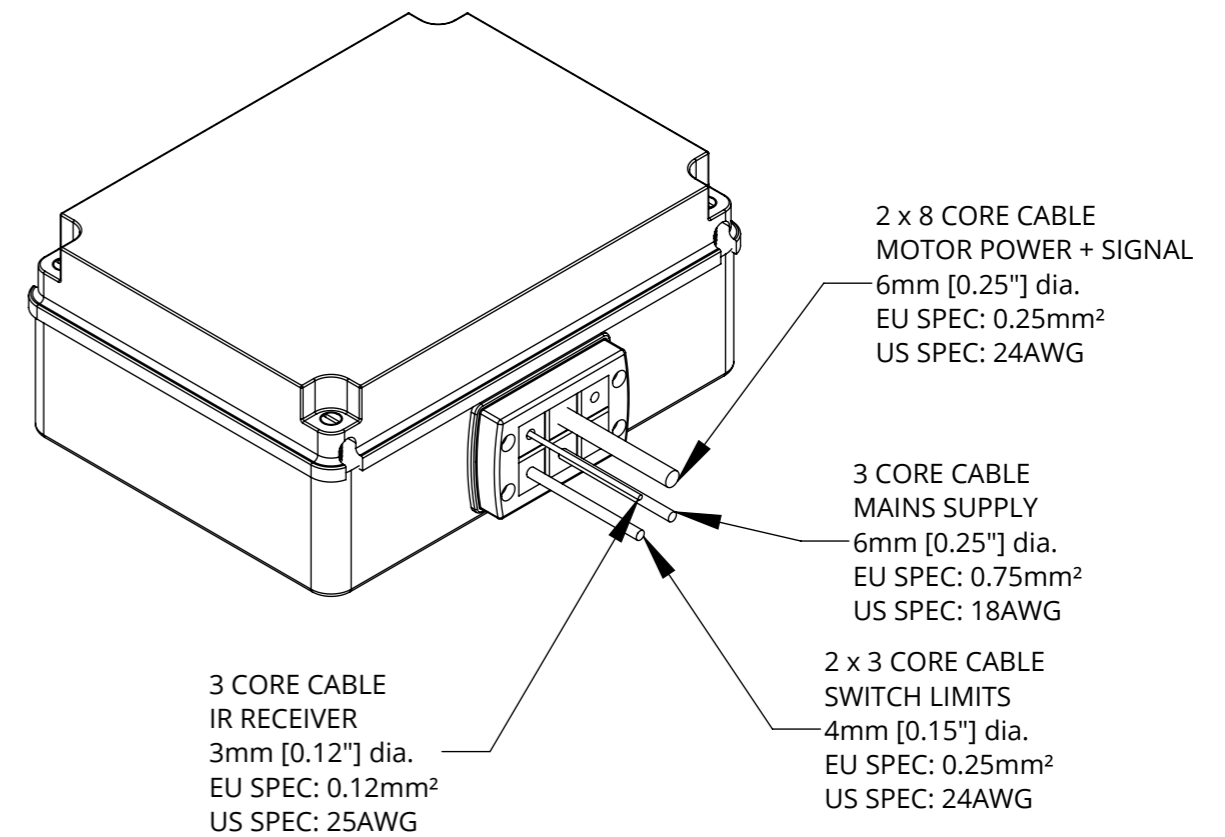
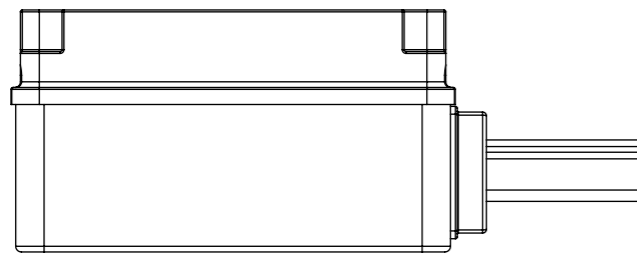
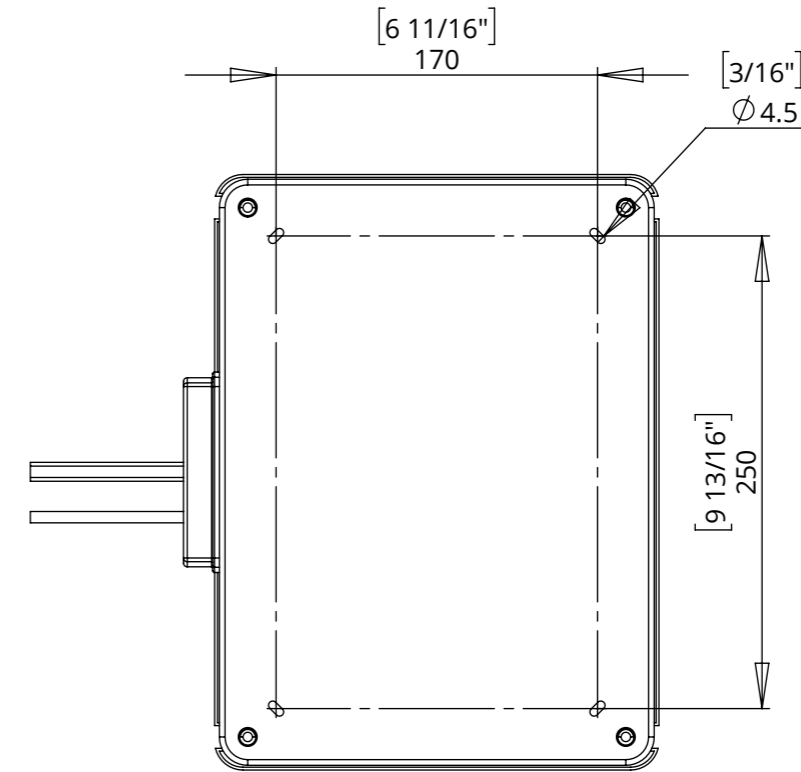
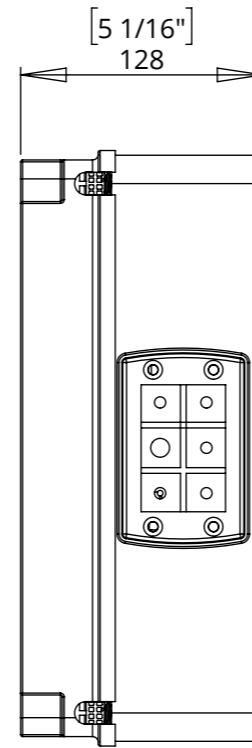
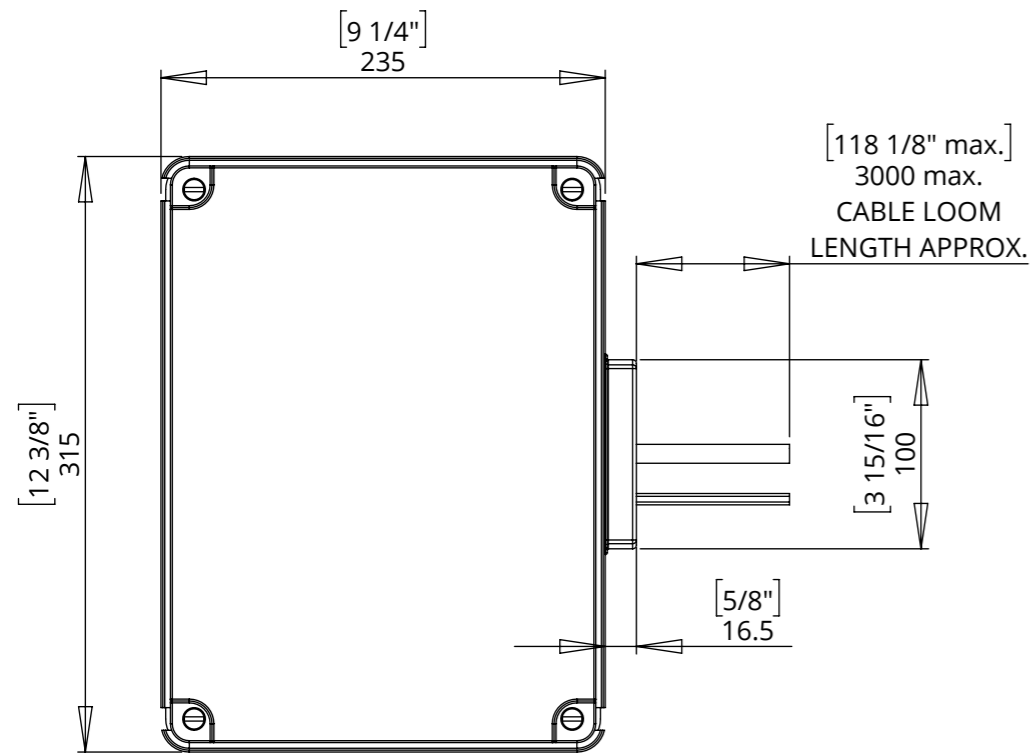
SECTION B-B | CAMERA REVEALED |



DCL-M

AXIS P5655-E CAMERA LIFT

CONTROL BOX DETAILS



NOTES

- ENCLOSURE AND CABLE GLANDS RATED TO IP56.
- ENCLOSURE AND LID FIXINGS ALL MADE FROM GEWISS GW PLAST 75.
- ENCLOSURE MATERIAL SUITABLE FOR TEMPERATURES +60 °C TO -25 °C.
- INTERNAL POWER SUPPLY UNIT (PSU) WILL REQUIRE 110V (6A) OR 240V (3A) AC INPUT.
- OTHER THAN CONTROL CABLES, ALL CABLES TERMINATE AT CONTROL BOARD VIA STANDARD PHOENIX CONNECTORS.
- CABLE LOOM LENGTH SUPPLIED AT APPROX. 3m [118"]. LOOM CAN BE EXTENDED UP TO MAXIMUM OF APPROX. 10m [400"].
- MINIMUM CABLE BEND RADIUS 25mm [1"].