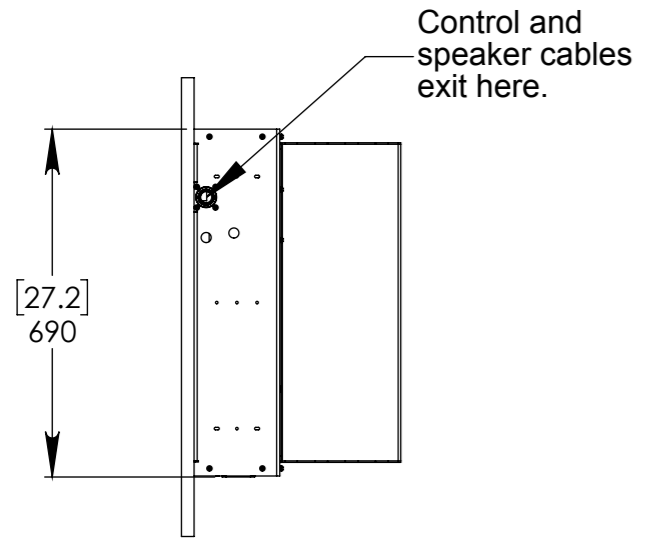
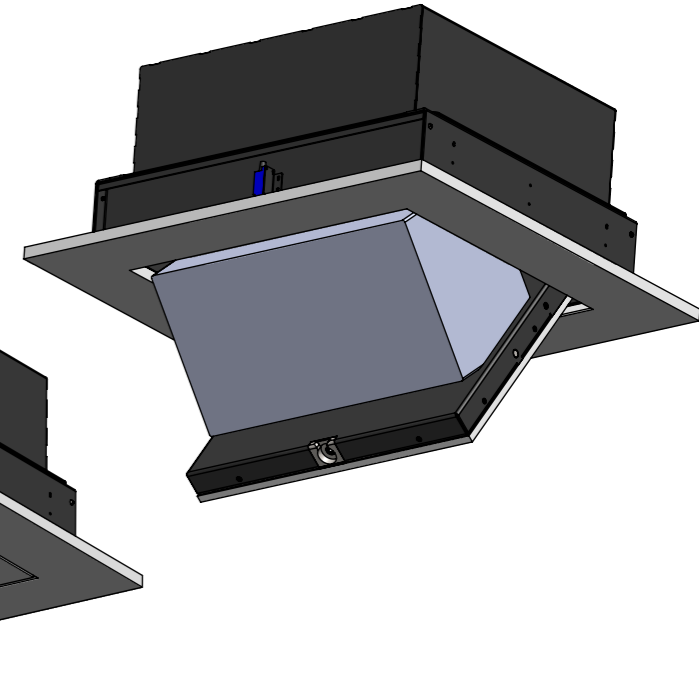
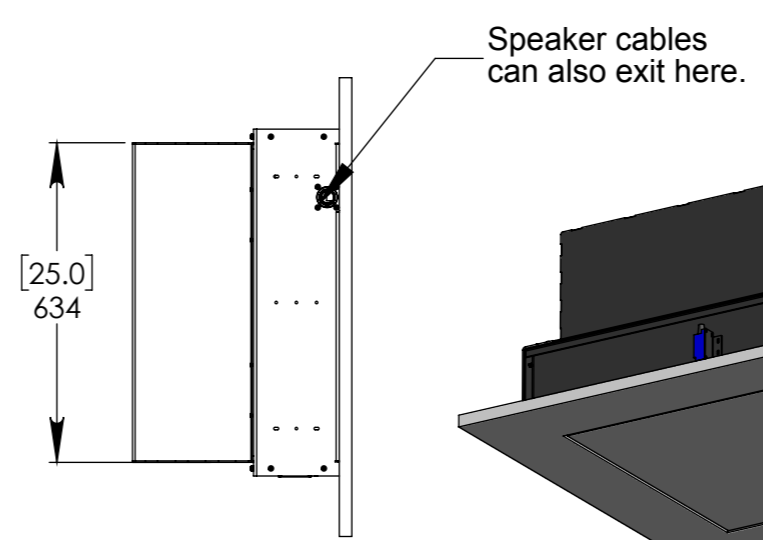


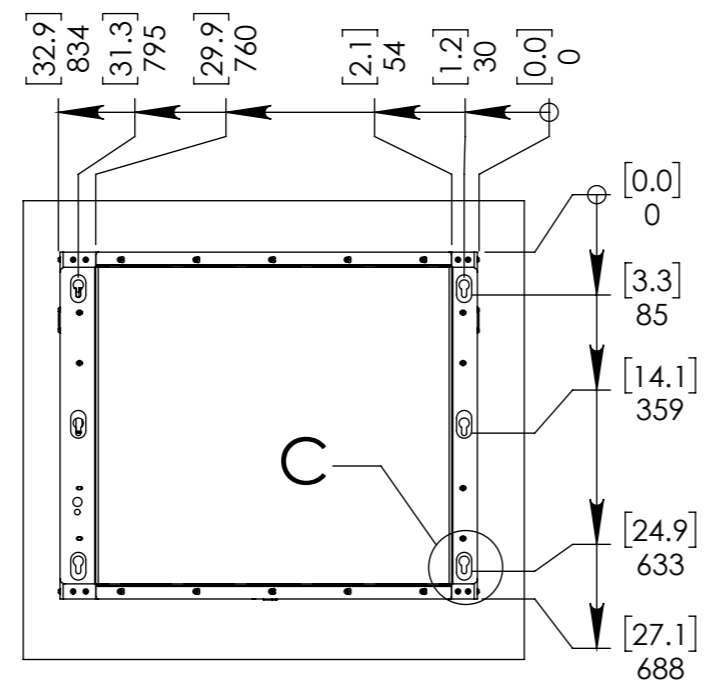
Left Side



Right Side

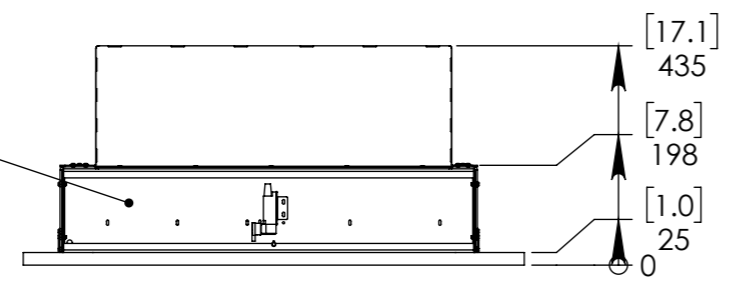


Top Plan View



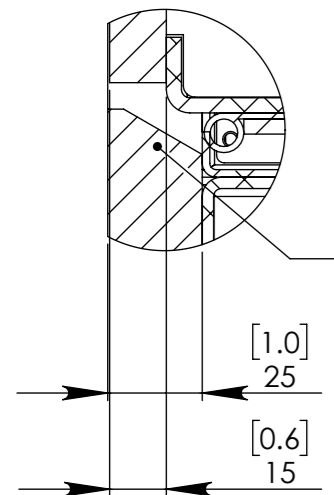
Allow access to this front elevation for service requirements.

Viewing Front

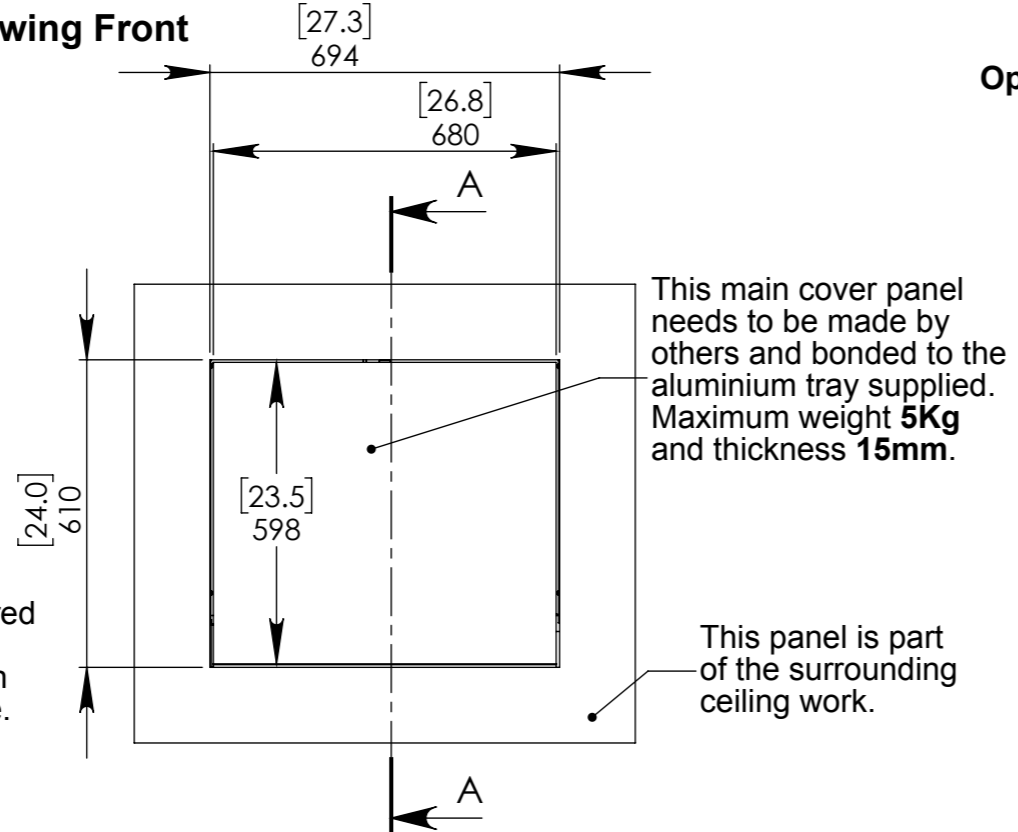


Detail B

Panel bonded to mechanism must be 15mm and the surrounding ceiling material 25mm.



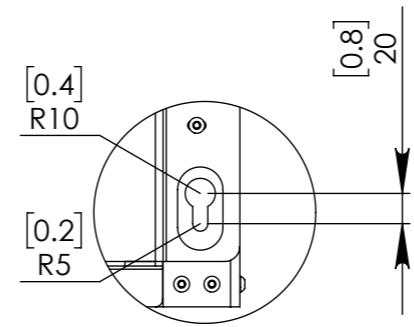
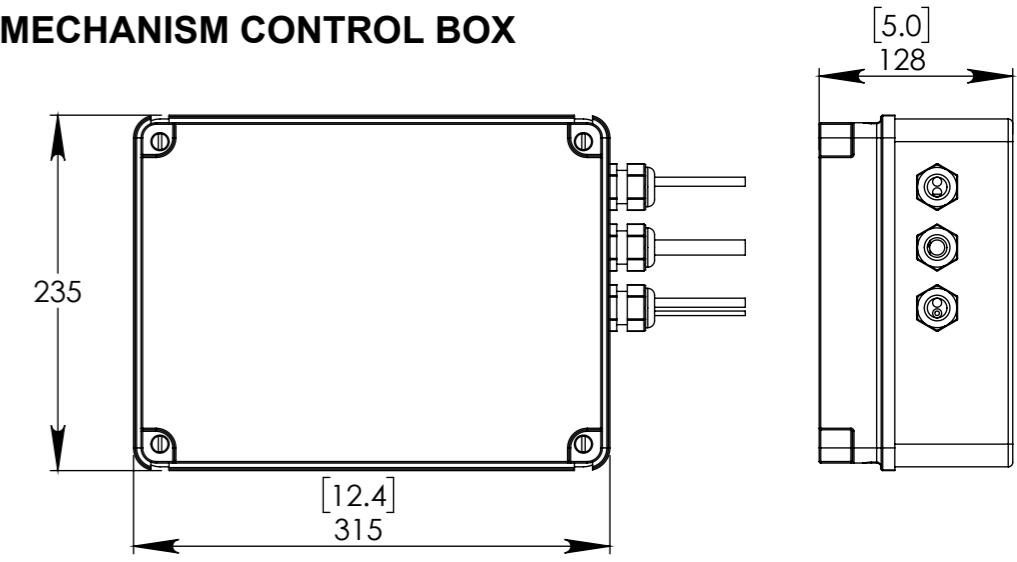
View Up On Ceiling



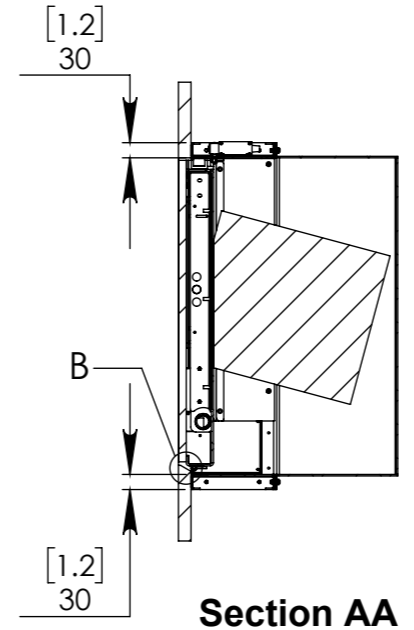
This main cover panel needs to be made by others and bonded to the aluminium tray supplied. Maximum weight **5Kg** and thickness **15mm**.

This panel is part of the surrounding ceiling work.

MECHANISM CONTROL BOX



Option 1 - Top Mounting Holes



Section AA

NOTES

- ENCLOSURE AND CABLE GLANDS RATED TO IP56.
- ENCLOSURE MATERIAL SUITABLE FOR TEMPERATURES +60 C TO -25 C.
- POWER SUPPLY UNIT (PSU) WILL ALLOW 110V OR 240V AC INPUT. THE SAME PSU IS USED FOR EU OR US MAINS SUPPLIES.
- OTHER THAN CONTROL CABLES, ALL CABLES TERMINATE AT CONTROL BOARD VIA STANDARD PHOENIX CONNECTORS.
- MINIMUM CABLE BEND RADIUS 25mm [1"].

See CAD files for more dimensional information.

