

TSL-H - LG110

TELESCOPIC SCREEN LIFT HEAVY



future automation

FUNCTION

An electric mechanism to lift a screen out of a cabinet. Custom made to suit screen size. Internal cabinet height can be as little as screen height + 40mm [1.6"].

SUITABILITY

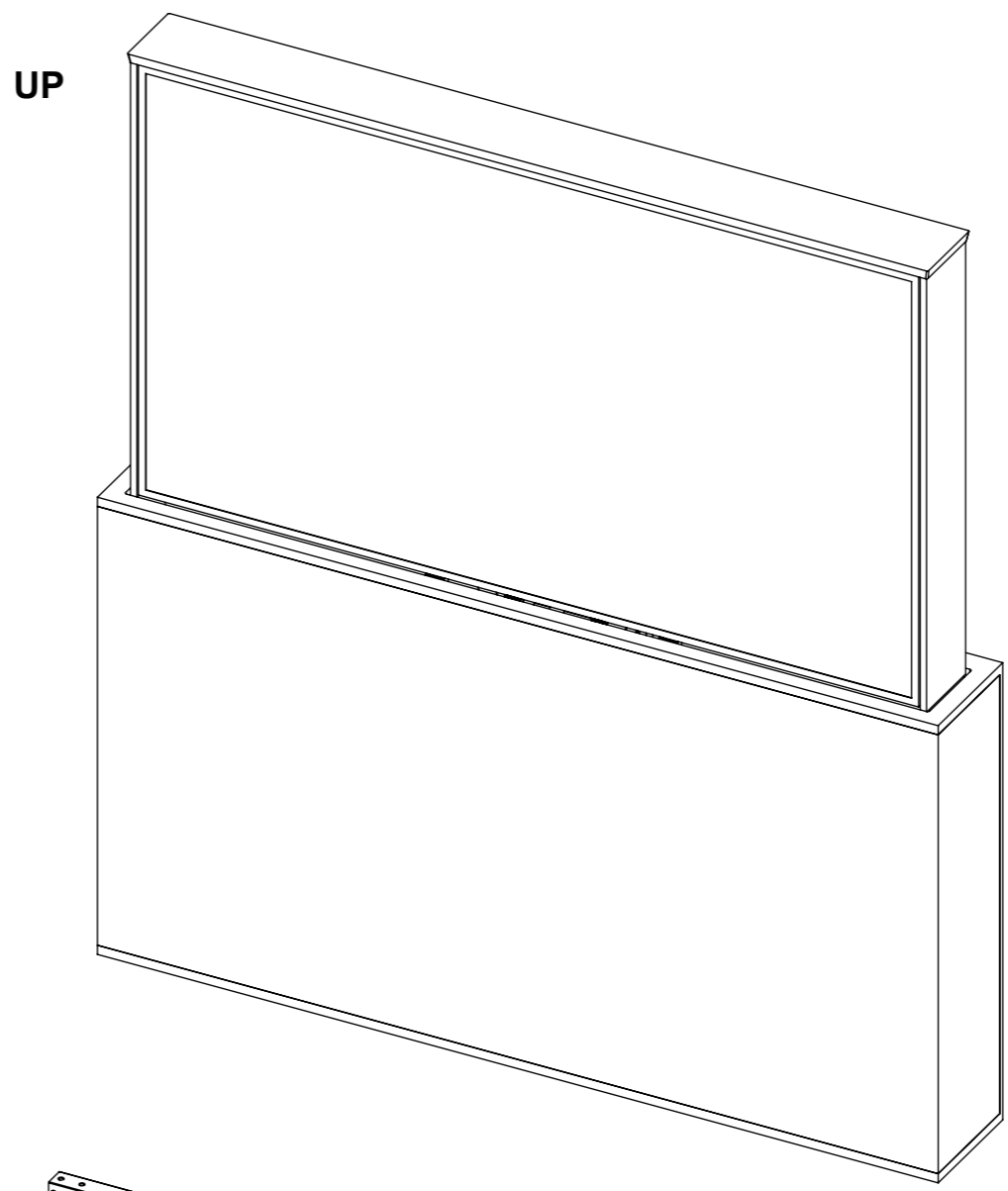
This TSL has been sized for a LG110UM5J-B screen.

Maximum weight for this mechanism is a screen weight of 80Kg [176lb] and an enclosure weight of 120Kg [264lb]. Absolute maximum.

CONTROL

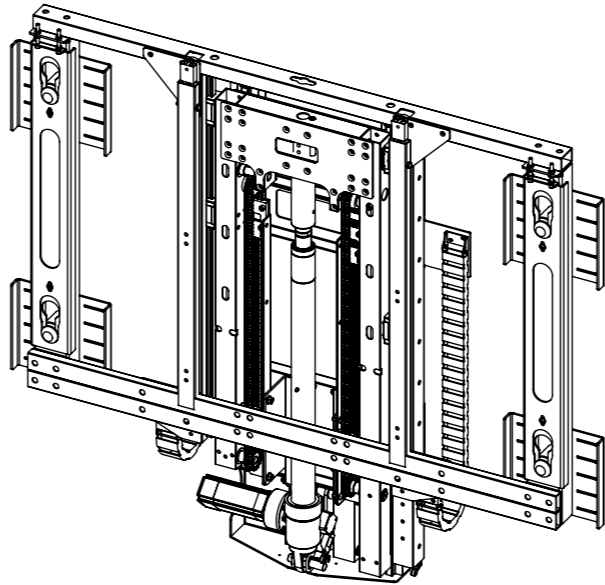
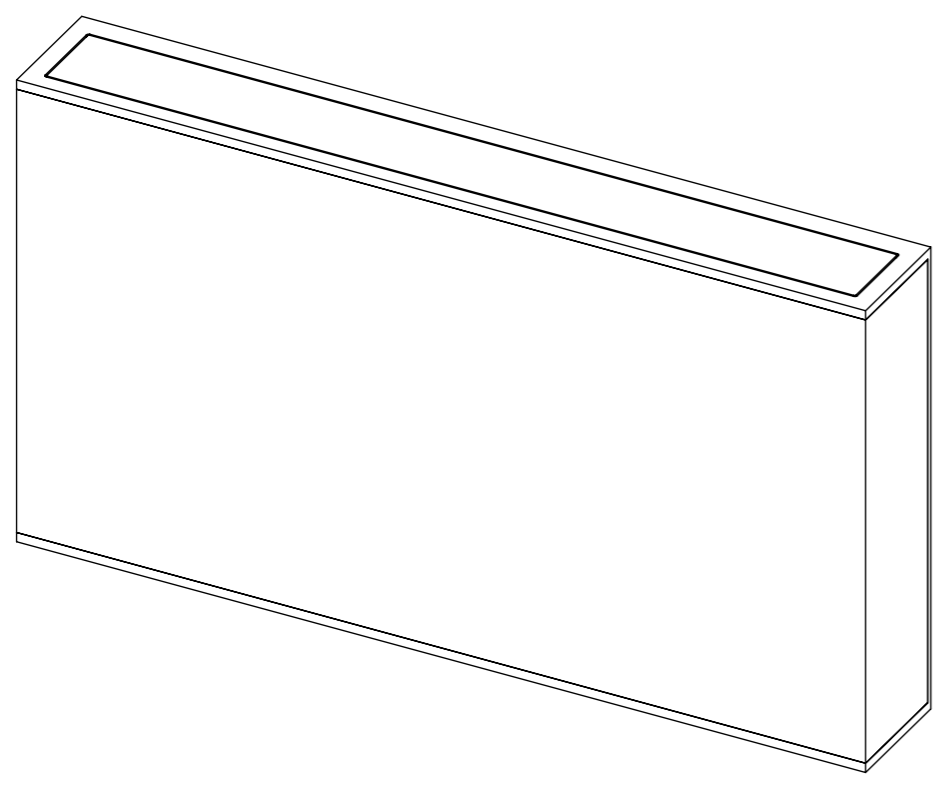
Supplied with basic infrared remote. Can be learnt by many learning remotes.

Also has switch control and RS232 so can be operated by relays, switches, Crestron / AMX or Lutron systems.



UP

DOWN



Mechanism as supplied.

WARNING

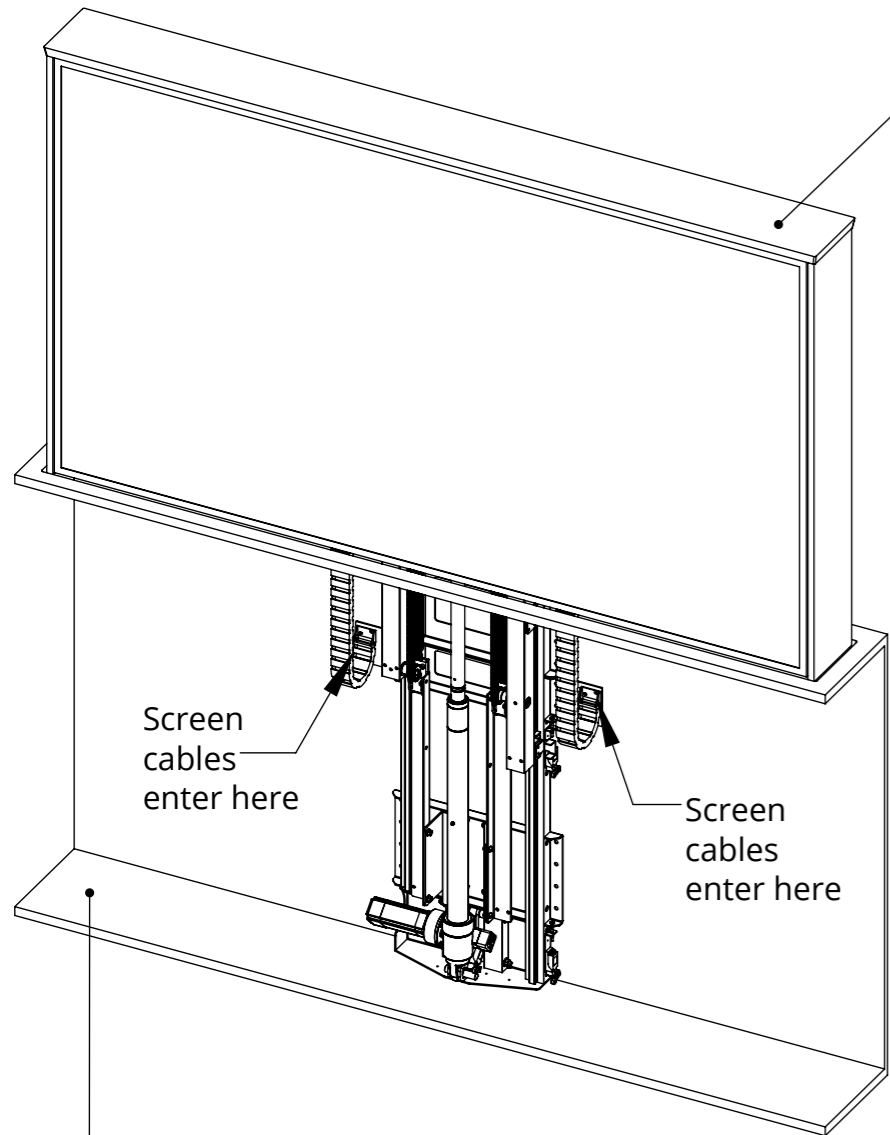
It is the responsibility of the installer to warn all potential end users of the dangers of interfering with mechanisms during operation

IMPORTANT

Mechanisms which lift or move weights need to be checked on a yearly basis for any damage which may result in an accident

TSL-H - LG110

TELESCOPIC SCREEN LIFT HEAVY



LID and ENCLOSURE - To be made by others. Total allowable weight for all timber work and lid is 120Kg [264lb].

The lid must be easily removed if the mechanism was stuck in the down position. The fixings for the screen are at the top here so it can then be lifted off. The drive to the motor can also be disconnected here allowing the screen and mechanism to be manually lifted.

Screen cables enter here

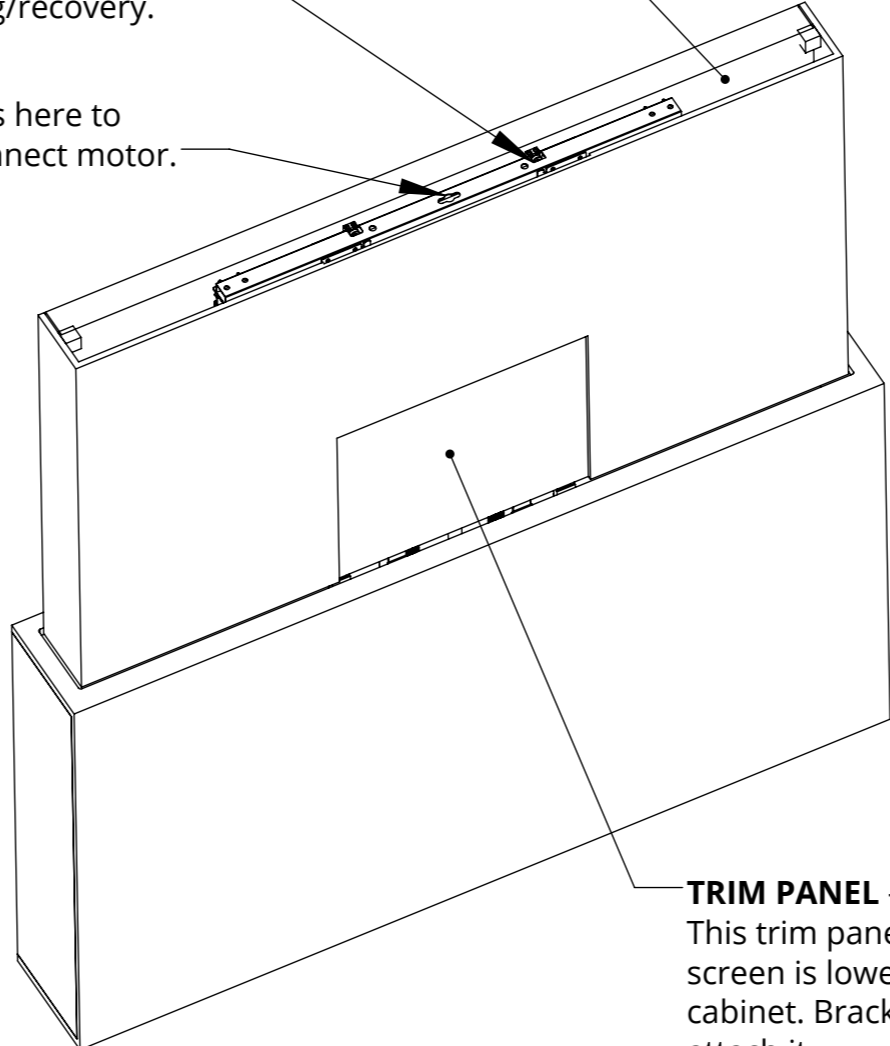
Screen cables enter here

Front access is required to install the lift.

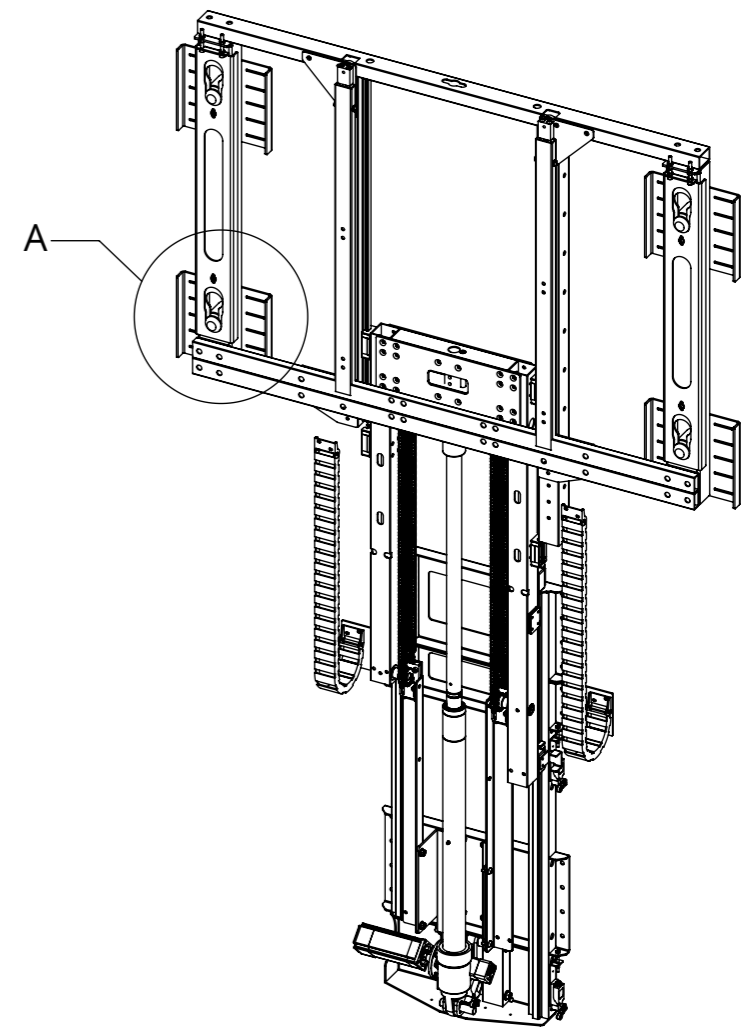
Allow 25mm [1"] in front of the screen if the mechanism is to be partially sunk below floor level.

Lifting eyes can be added here to assist in manual Lifting/recovery.

Access here to disconnect motor.



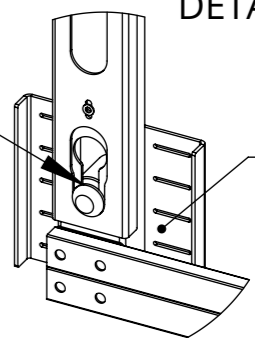
TRIM PANEL - Not supplied. This trim panel is lifted up as the screen is lowered into the cabinet. Brackets are supplied to attach it.



A

Key hole details allow the enclosure to be hooked into place.

DETAIL A



Brackets for enclosure allow adjustment.

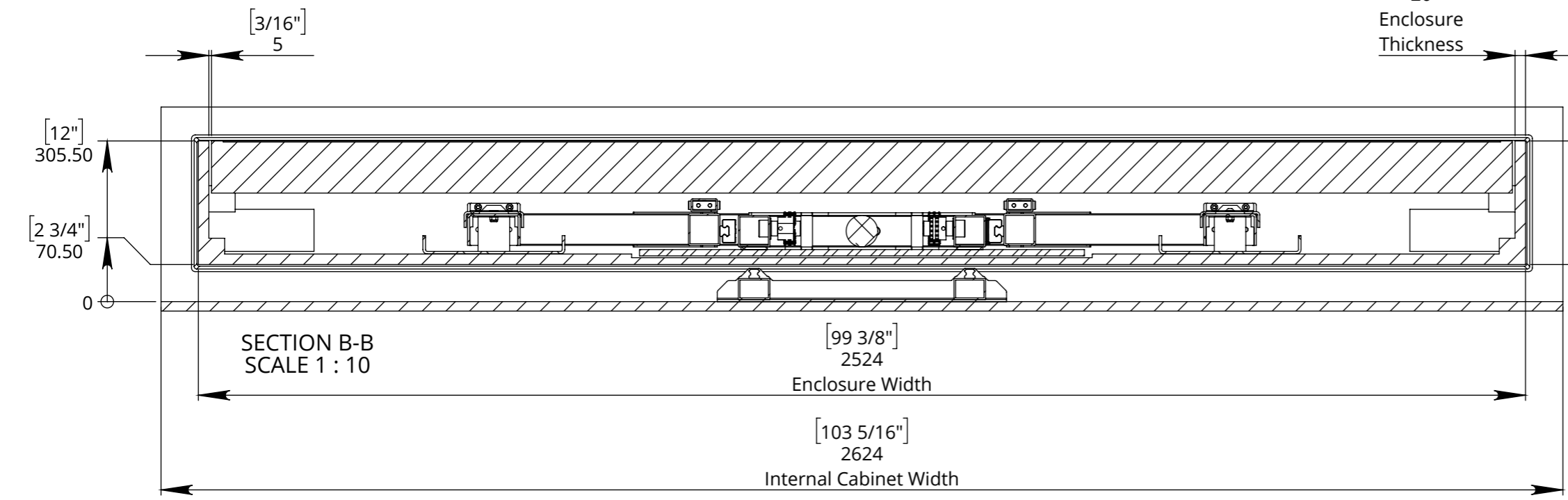
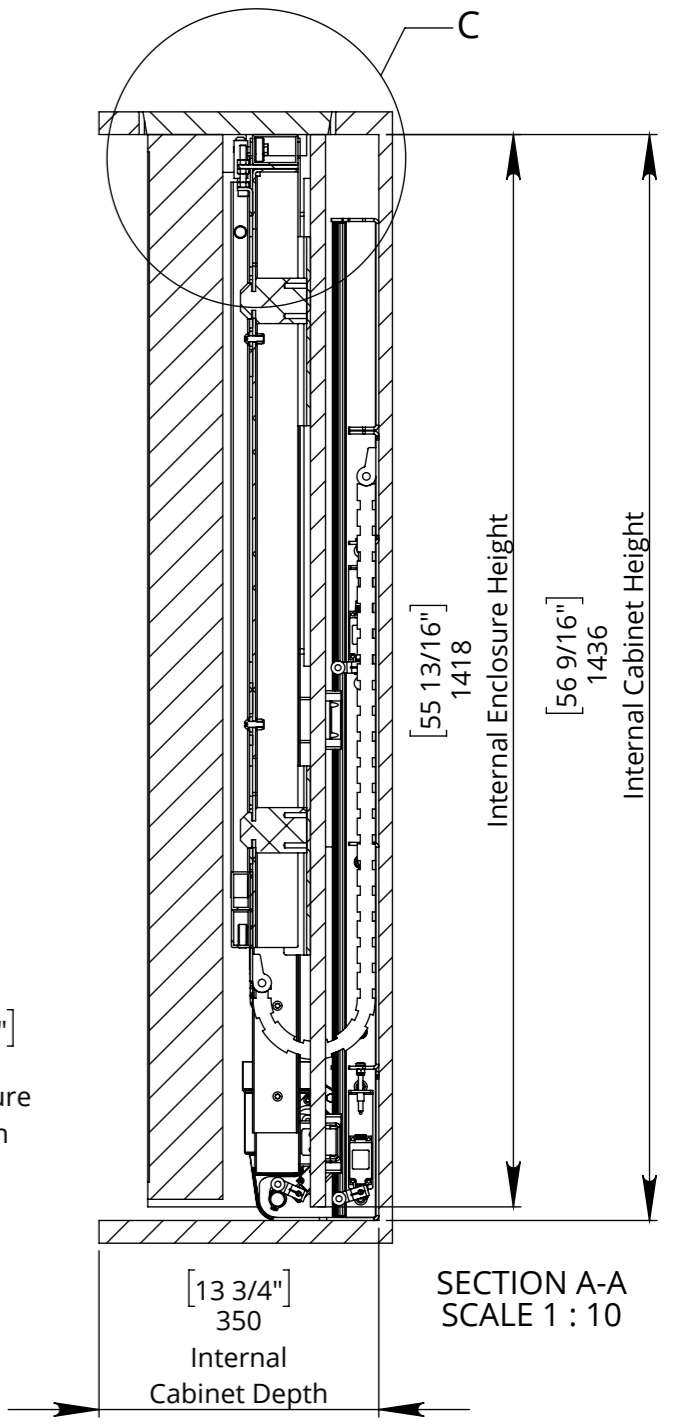
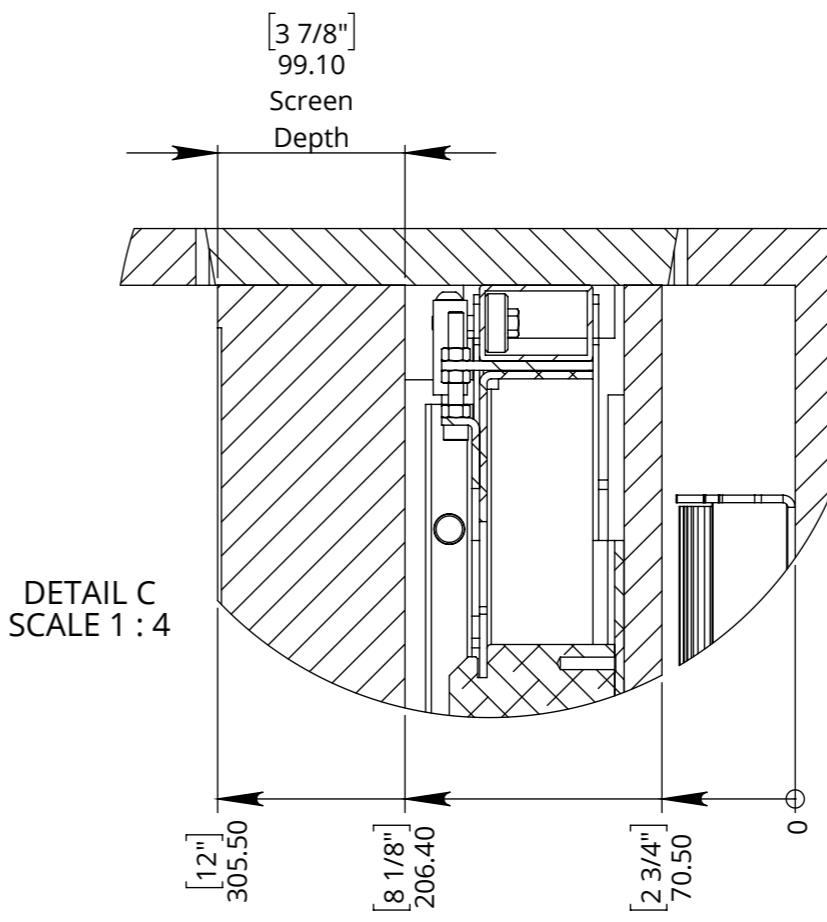
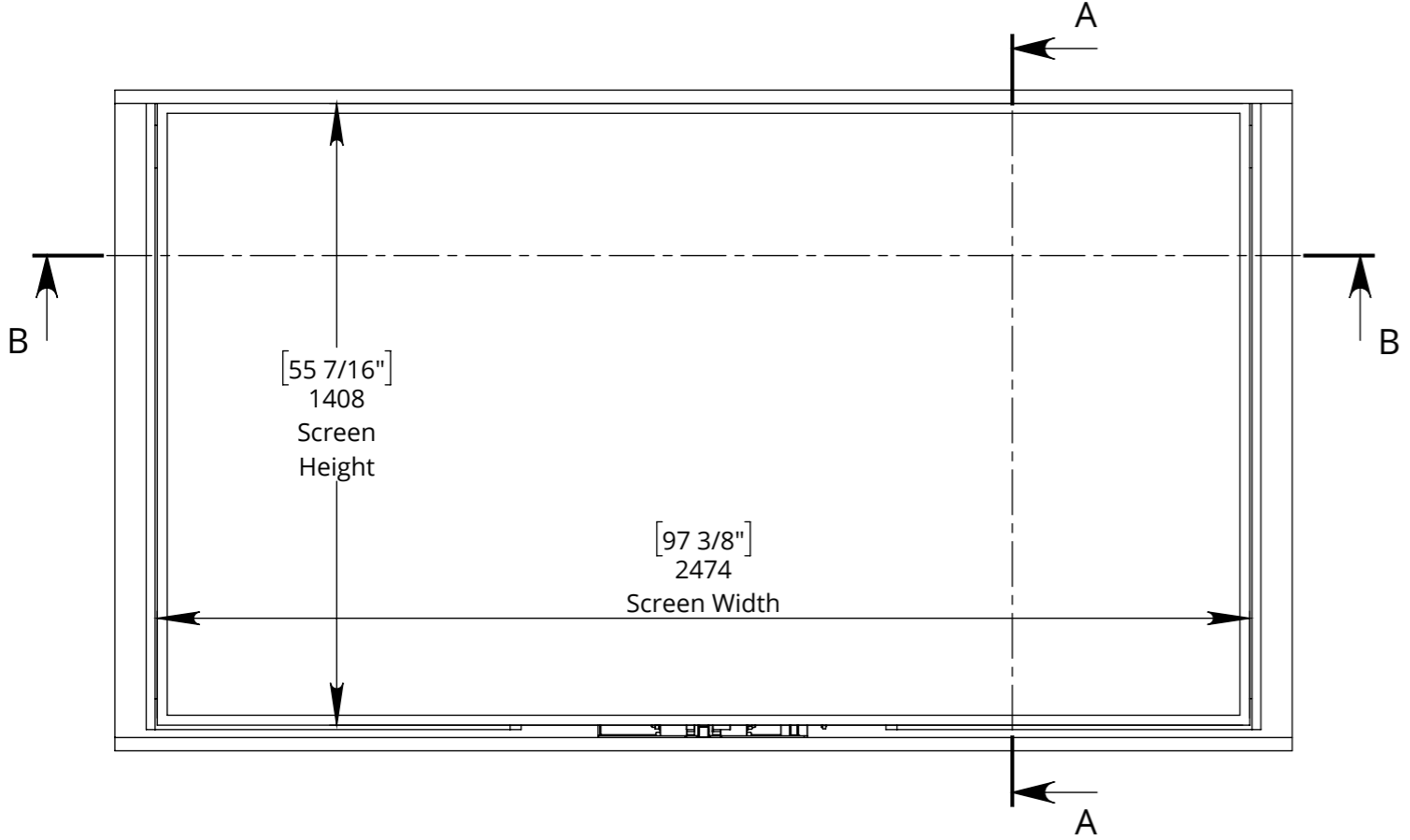
TSL-H - LG110

TELESCOPIC SCREEN LIFT HEAVY



future automation

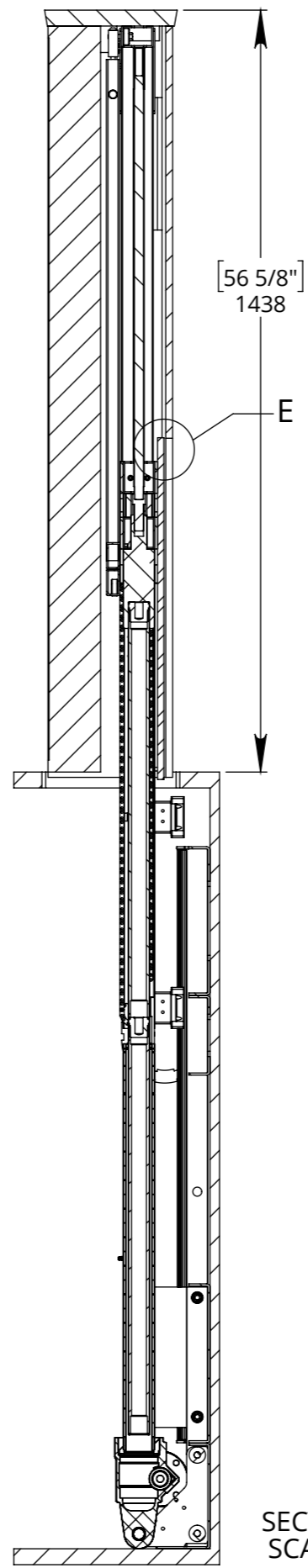
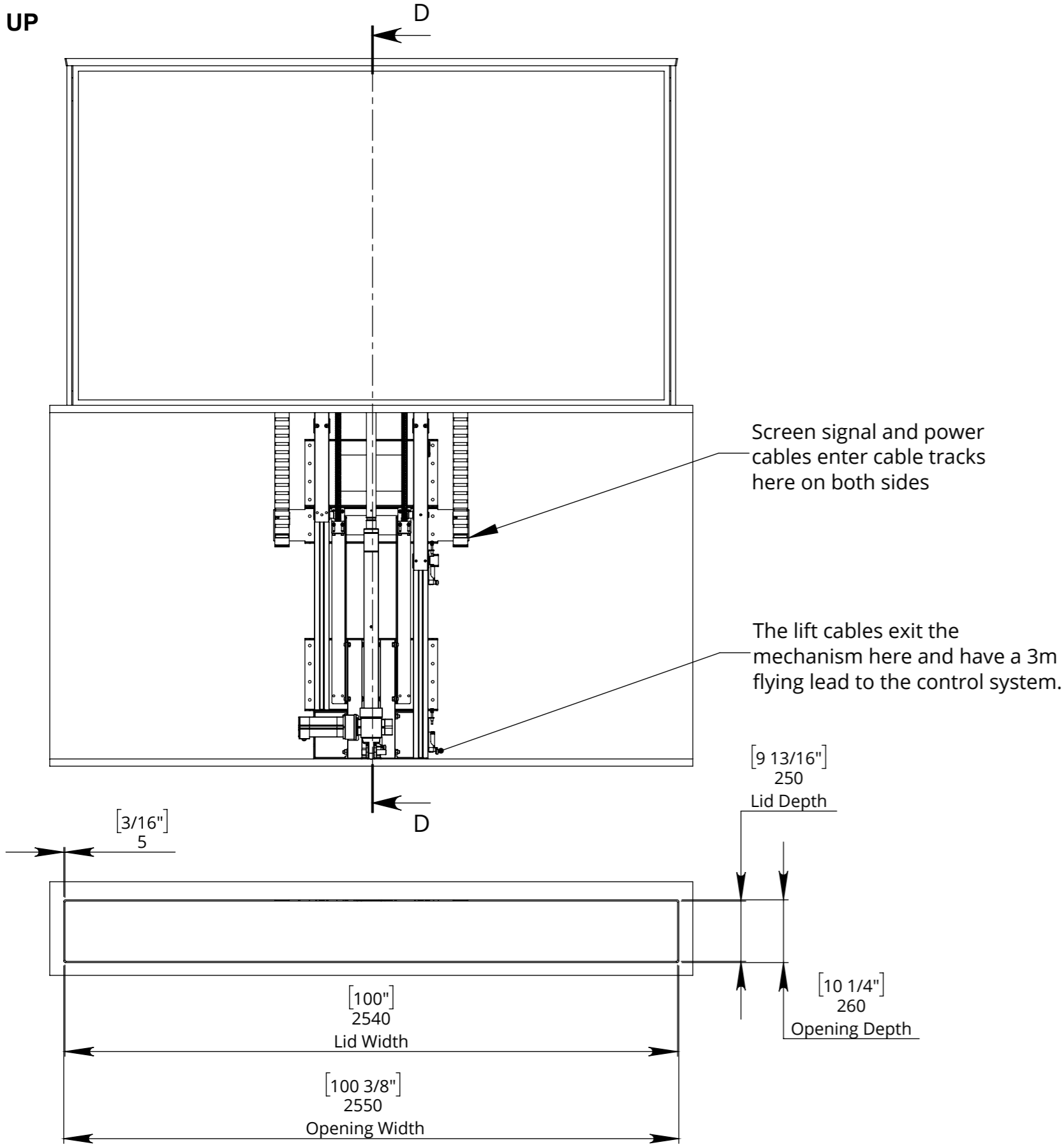
DOWN



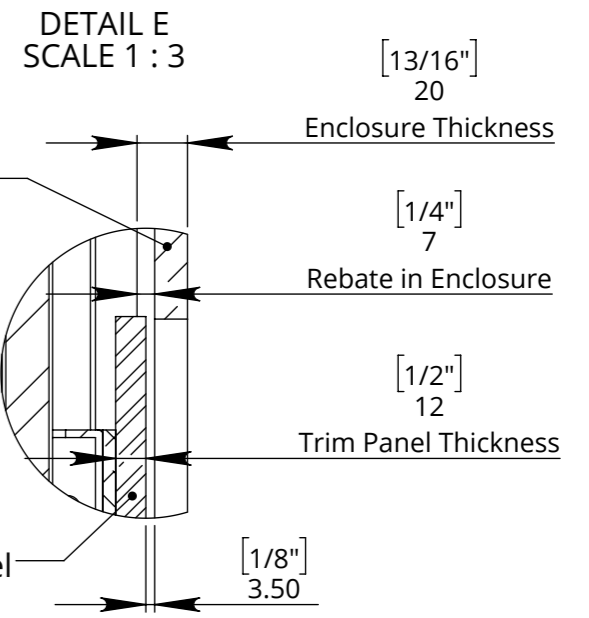
TSL-H - LG110

TELESCOPIC SCREEN LIFT HEAVY

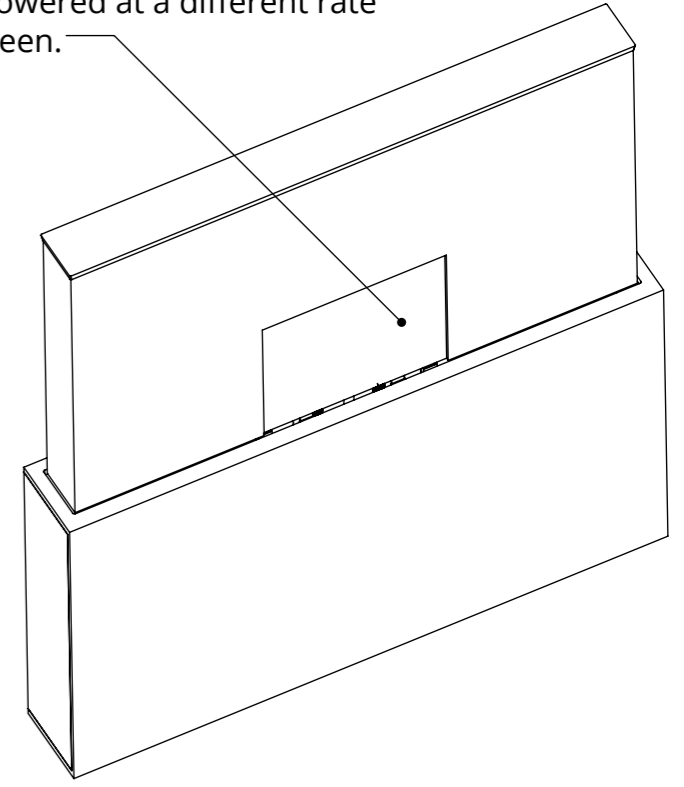
UP



SECTION D-D
SCALE 1 : 12



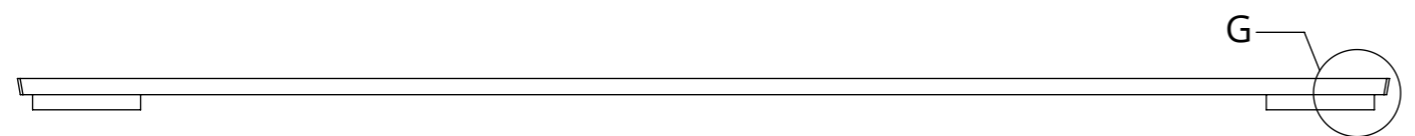
The trim panel is attached to a certain part of the mechanism so that it is lowered at a different rate to the screen.



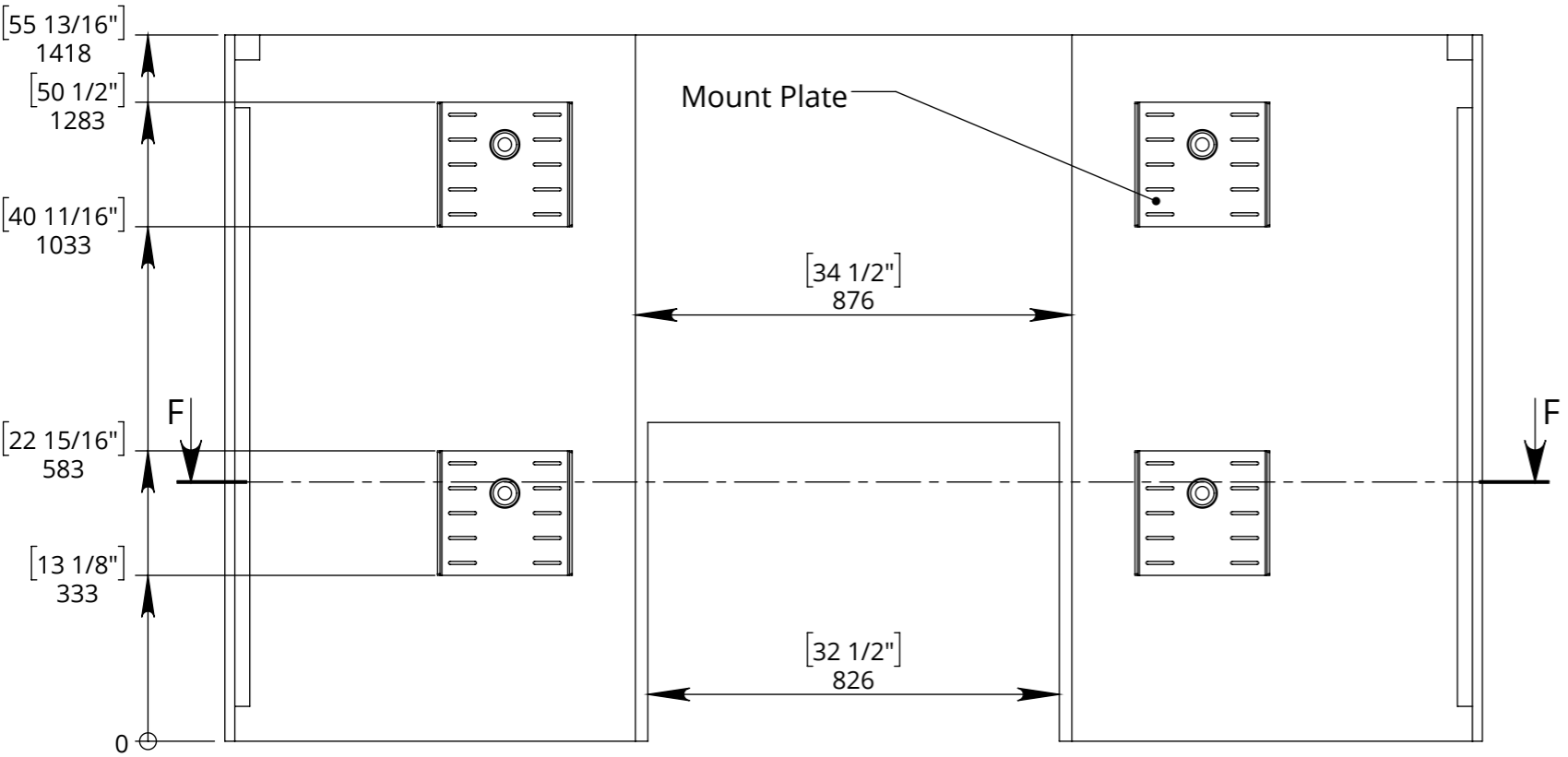
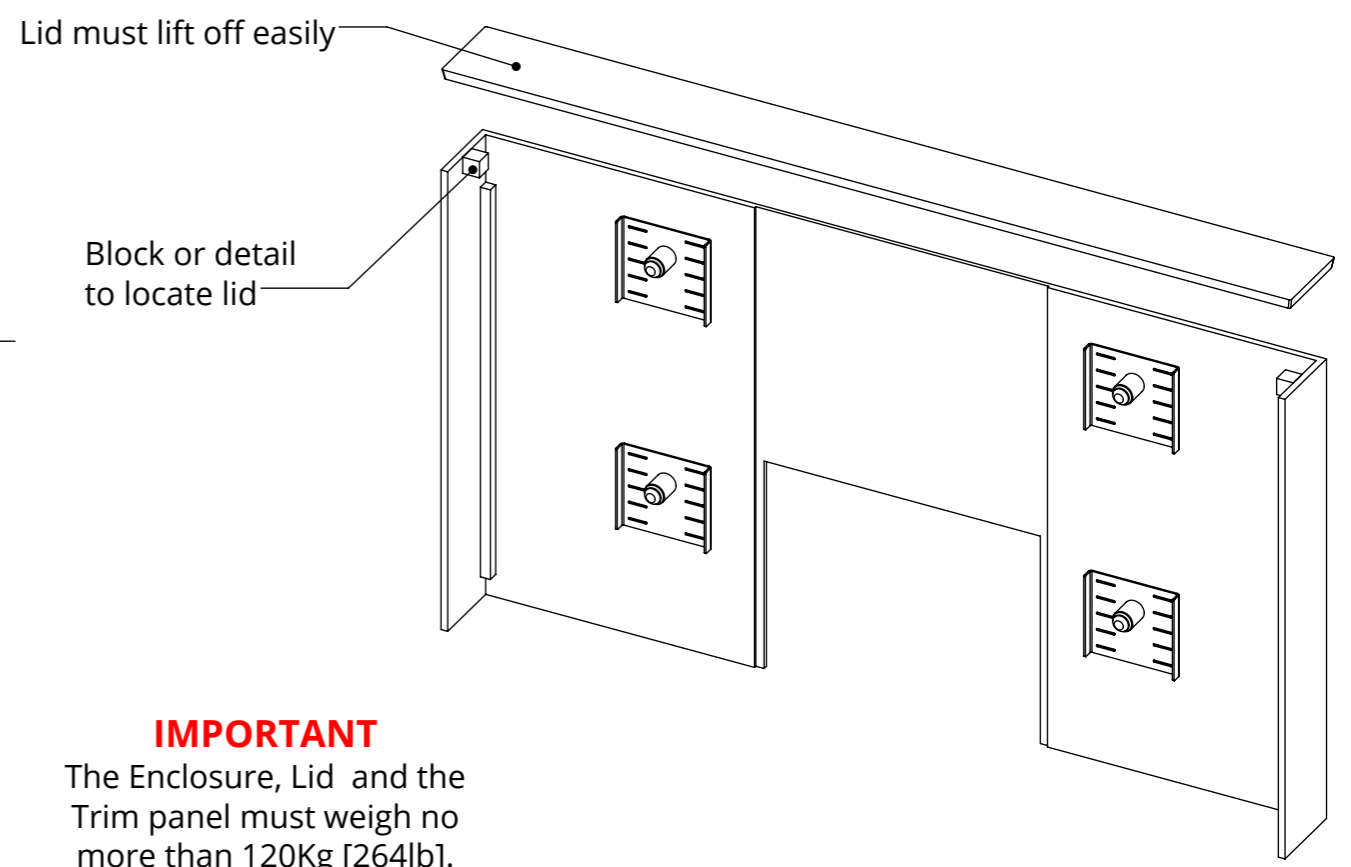
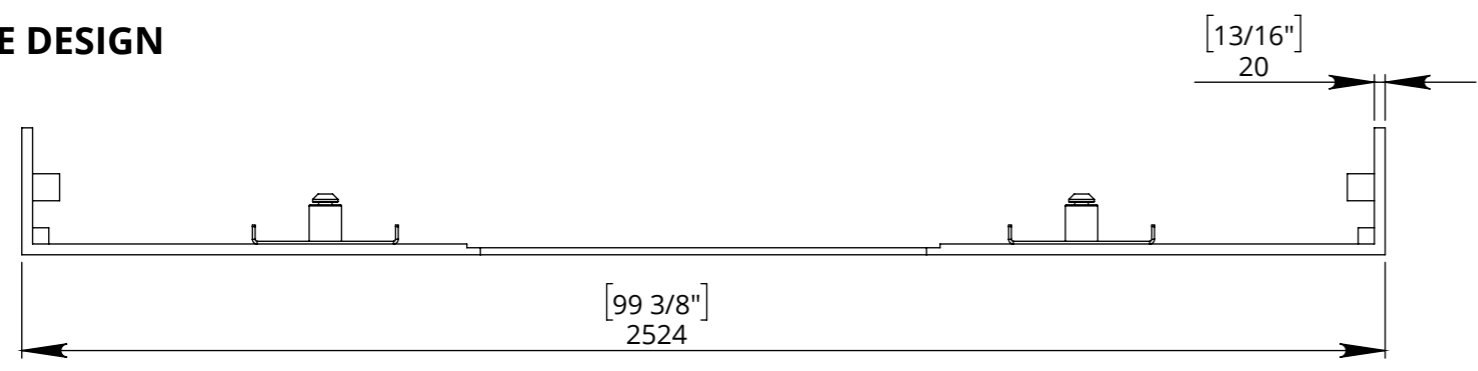
TSL-H - LG110

TELESCOPIC SCREEN LIFT HEAVY

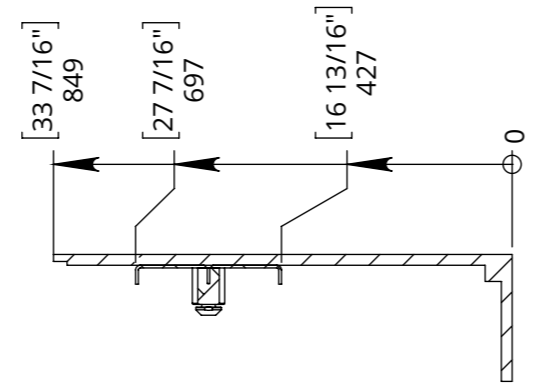
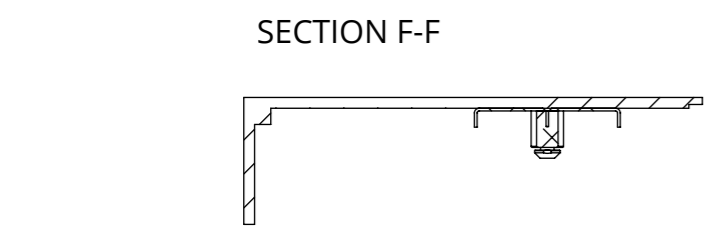
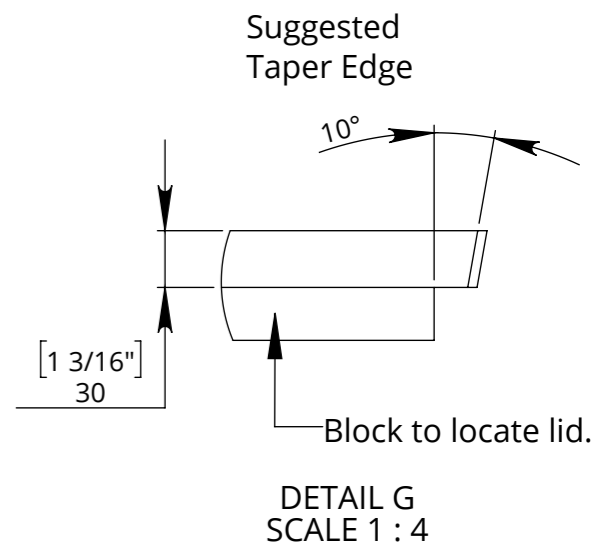
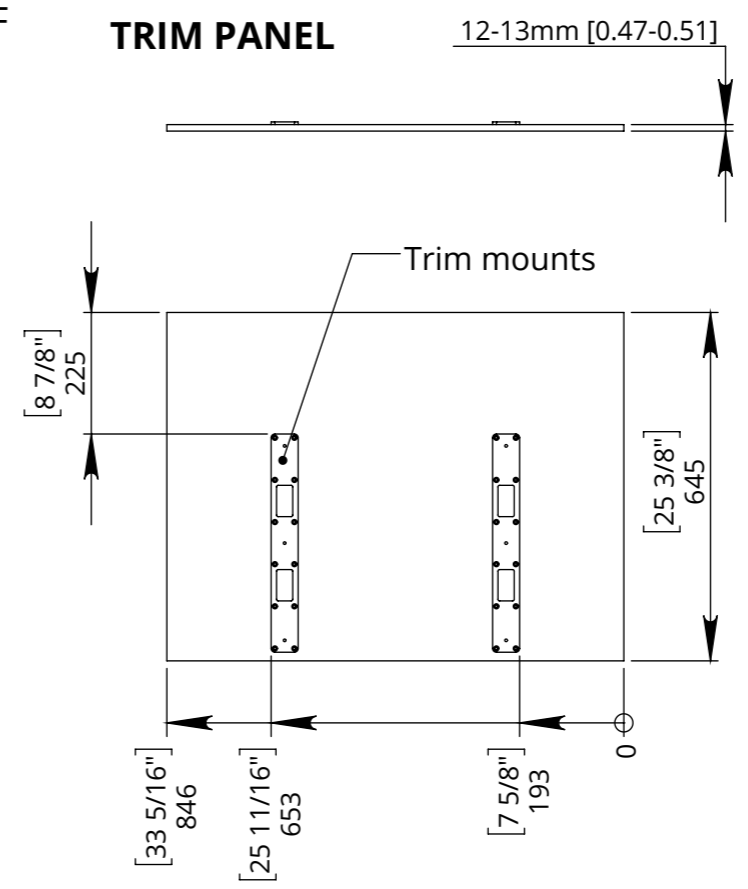
LID



ENCLOSURE DESIGN



TRIM PANEL 12-13mm [0.47-0.51]



SEE CAD FOR FINER DETAIL

TSL-H - LG110

TELESCOPIC SCREEN LIFT HEAVY



future automation

INSTALL INSTRUCTIONS

- Check that the cabinet, enclosure, lid and the trim panel are made to the details shown on the previous pages.
- You can stand the mechanism up on its base to test it before putting in the cabinet. See control document for details. Use the IR remote with caution and always cover the STOP button in case of issues.
- Centrally fix the mechanism to the back of the cabinet in the places shown.
- Run up and down and then add the enclosure.
- Adjust the position of the enclosure and adjust the up and down switches with caution. Temporarily add lid to check height.
- Run screen cables up into enclosure. Secure cables as they enter and leave the cable tracks with cable ties. Make sure no cables can get tangled or caught as the mechanism moves.
- Add trim panel. And adjust so it does not clash in the up or down positions. Watch as it initially moves and cover the STOP button.
- The uprights can be removed from the mechanism and added to the screen at the correct height. Rest screen on floor to connect cables before hooking into place.
- Check movement with screen with caution.

