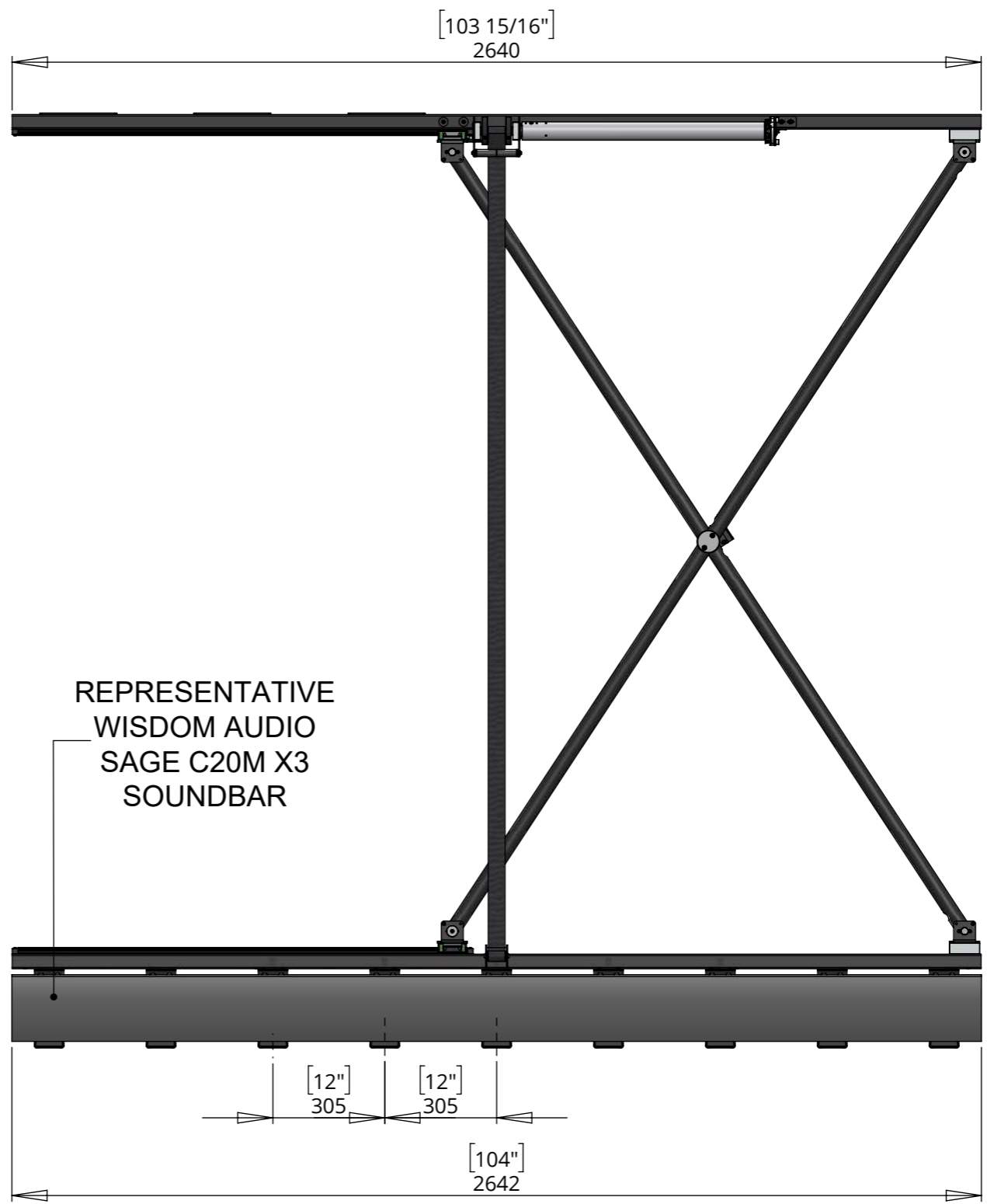
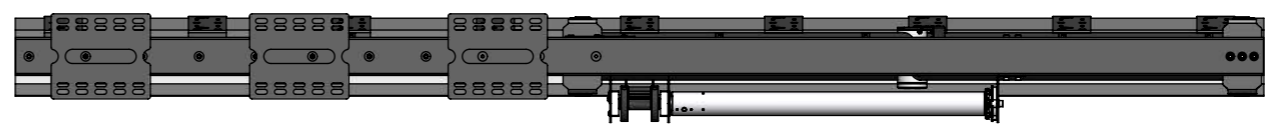
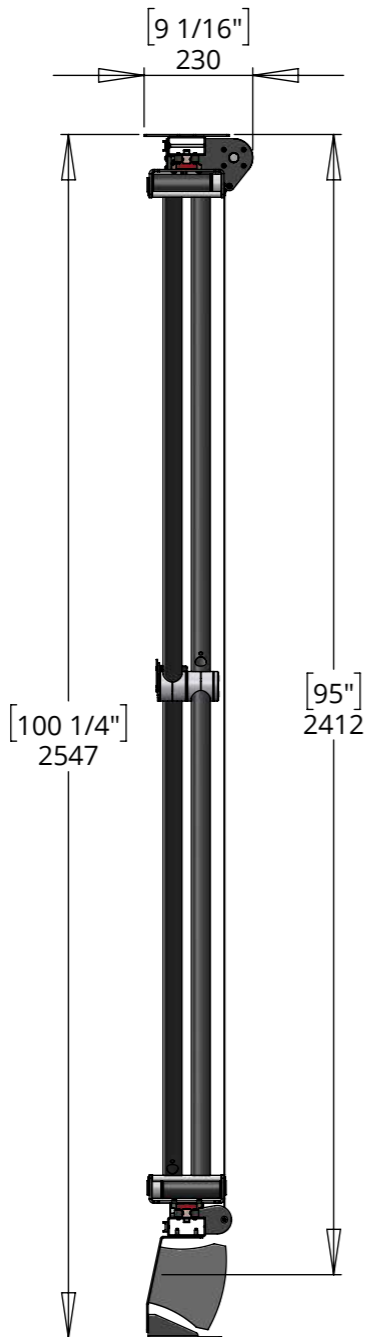


WISDOM AUDIO SOUNDBAR DROP - FIXED PANEL

SOUNDBAR MECHANISM DIMENSIONS

NOTE:
Mechanism lifting capacity: 45Kg (99lb)

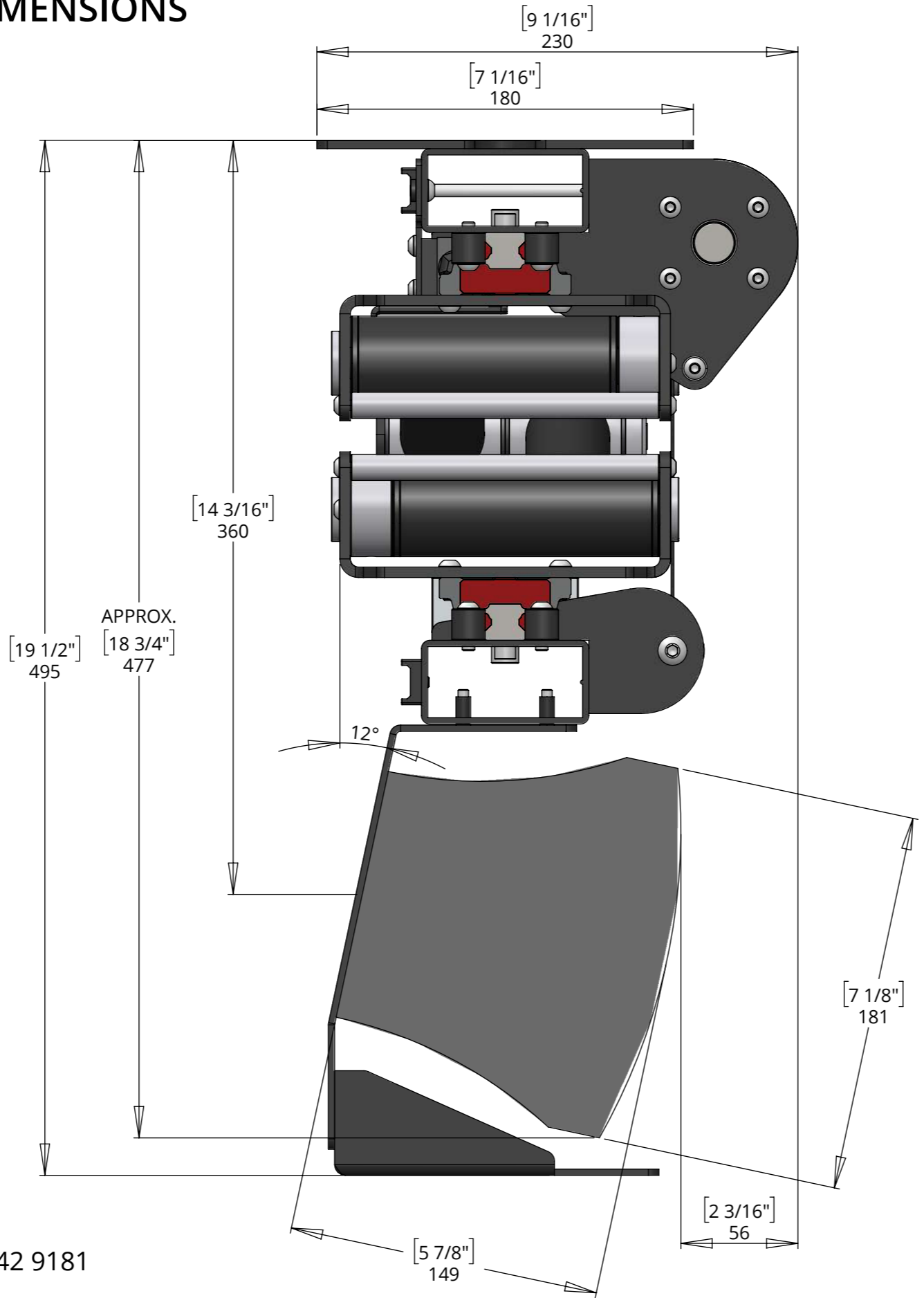
Mechanism is shown in the 'OPEN' position.



WISDOM AUDIO SOUNDBAR DROP - FIXED PANEL

SOUNDBAR MECHANISM DIMENSIONS

NOTE:
Mechanism lifting capacity: 45Kg (99lbs)
Mechanism is shown in the 'CLOSED' position.



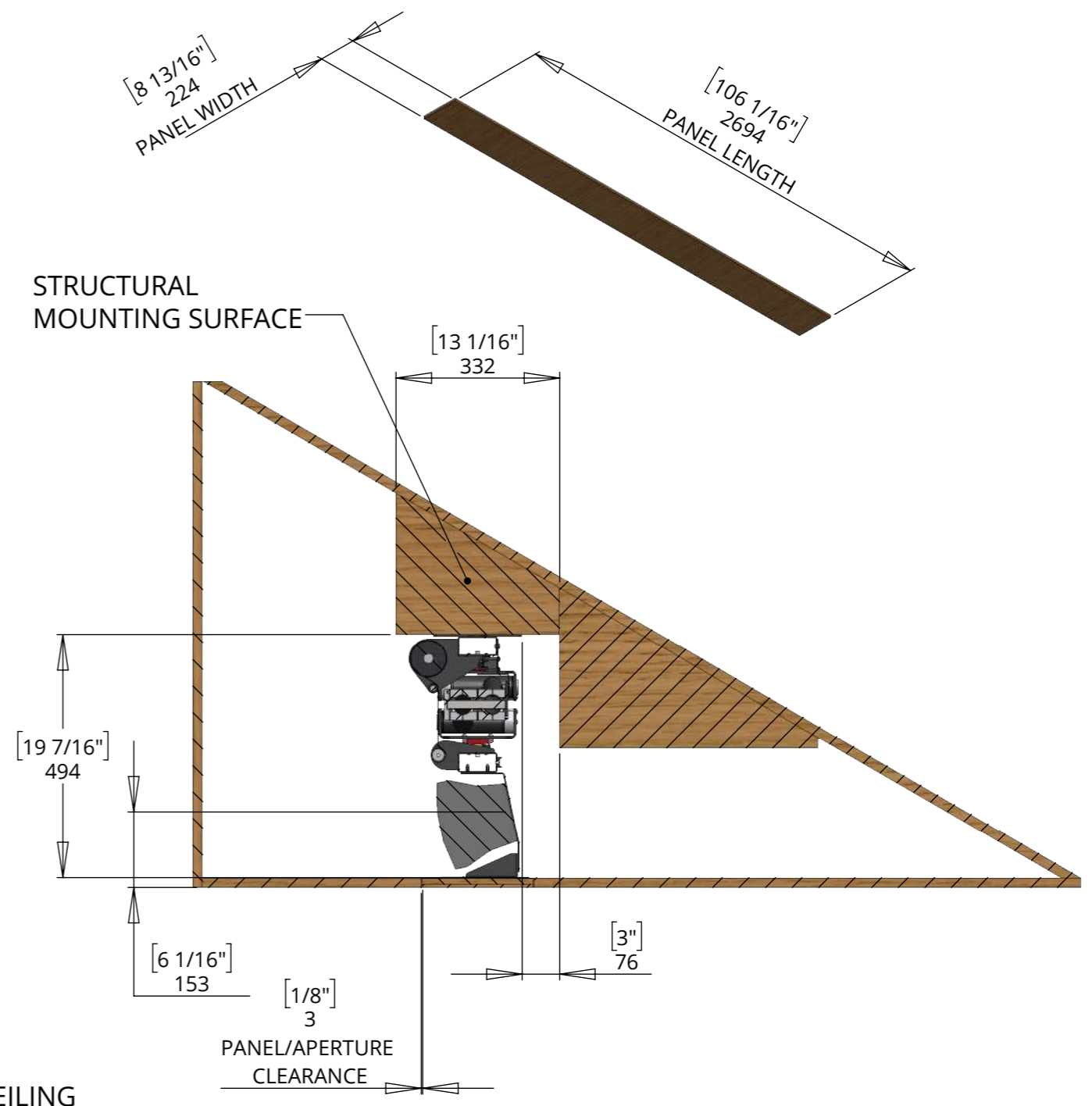
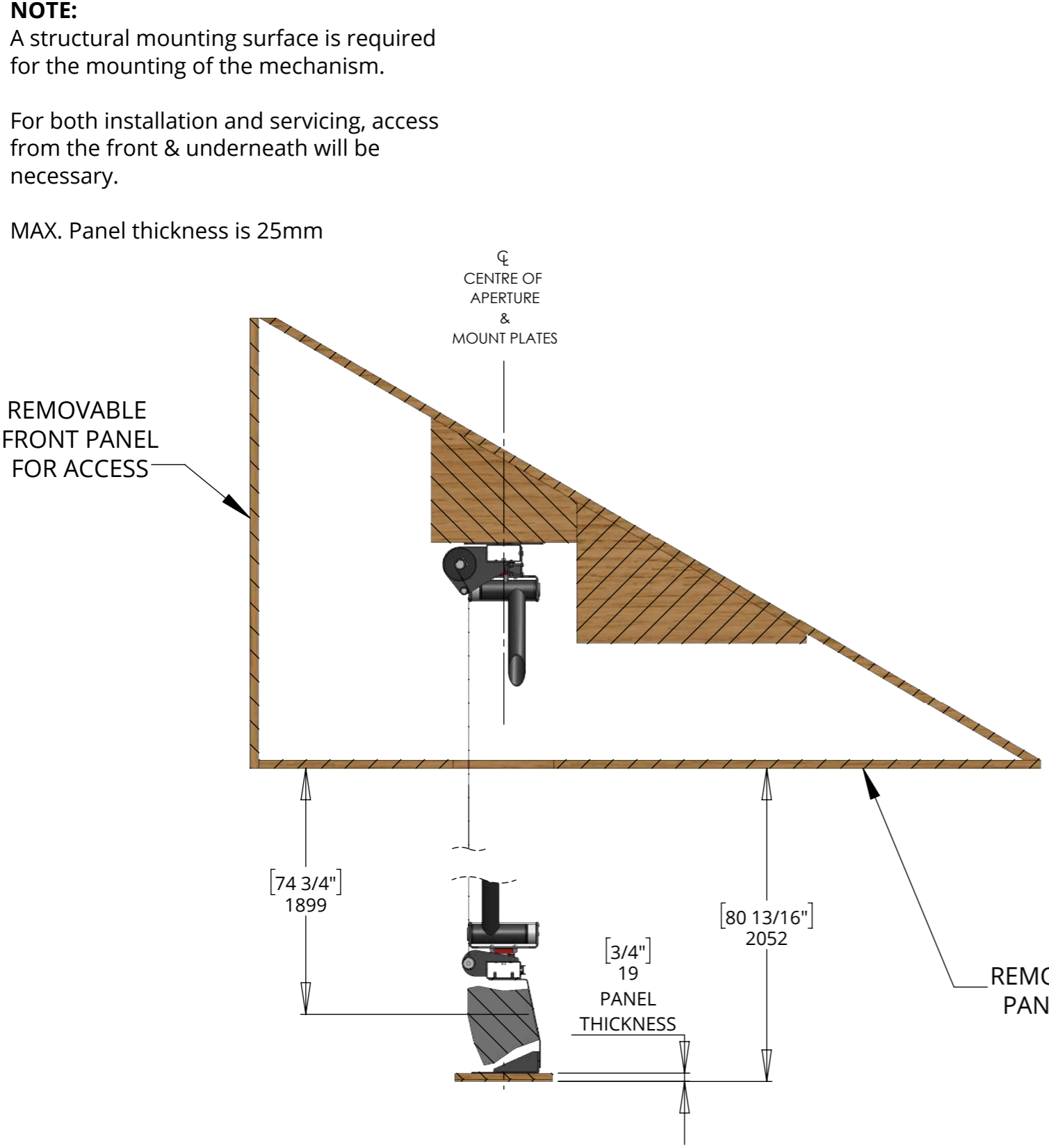
WISDOM AUDIO SOUNDBAR DROP - FIXED PANEL

MOUNTING & ACCESSIBILITY

NOTE:
A structural mounting surface is required for the mounting of the mechanism.

For both installation and servicing, access from the front & underneath will be necessary.

MAX. Panel thickness is 25mm



WASD-FP



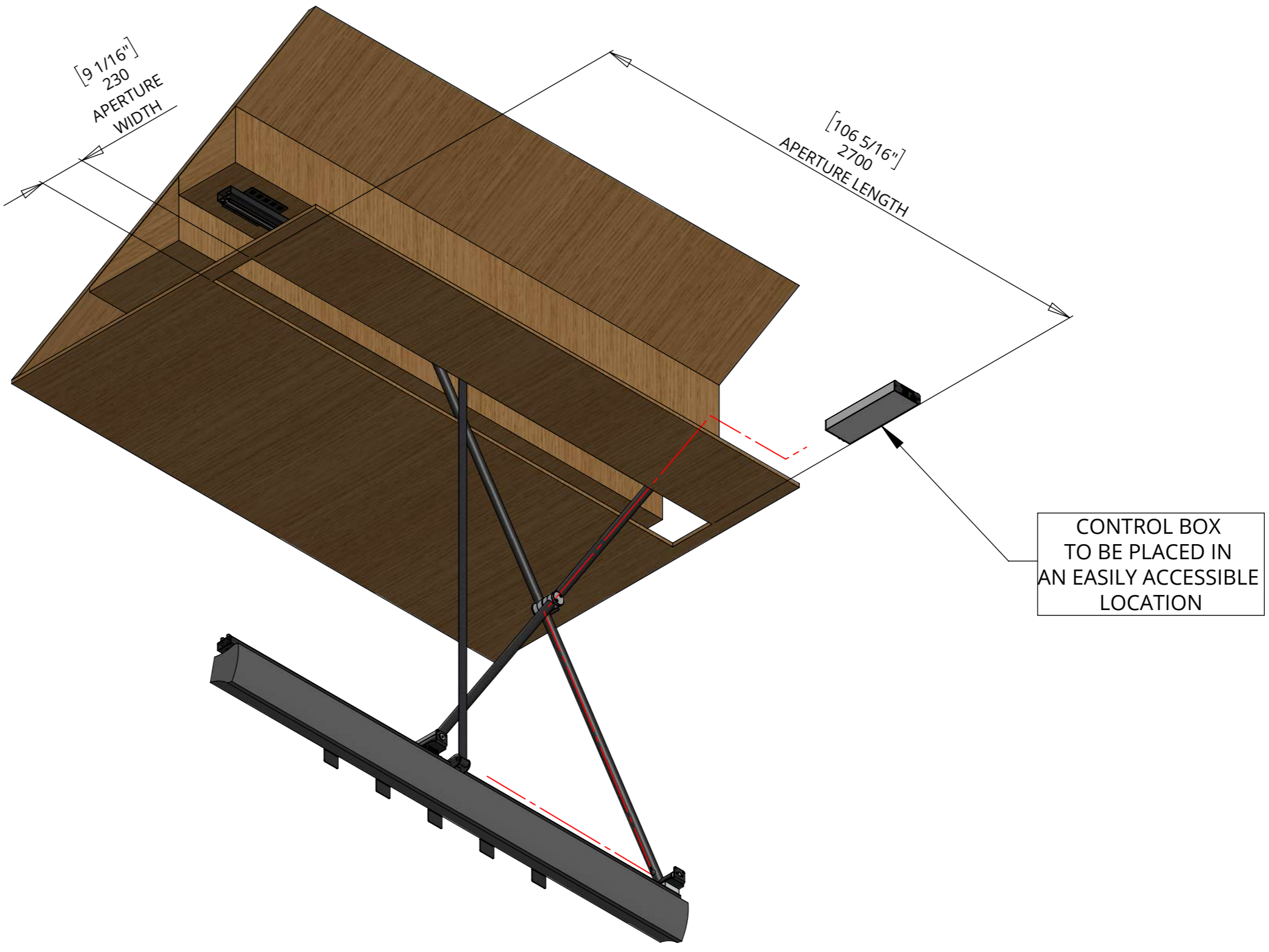
future automation

WISDOM AUDIO SOUNDBAR DROP - FIXED PANEL

CABLE ROUTE & CONTROL BOX LOCATION

NOTE:

Cables are to be routed through the scissor arms, as depicted in the view below.



WASD-FP

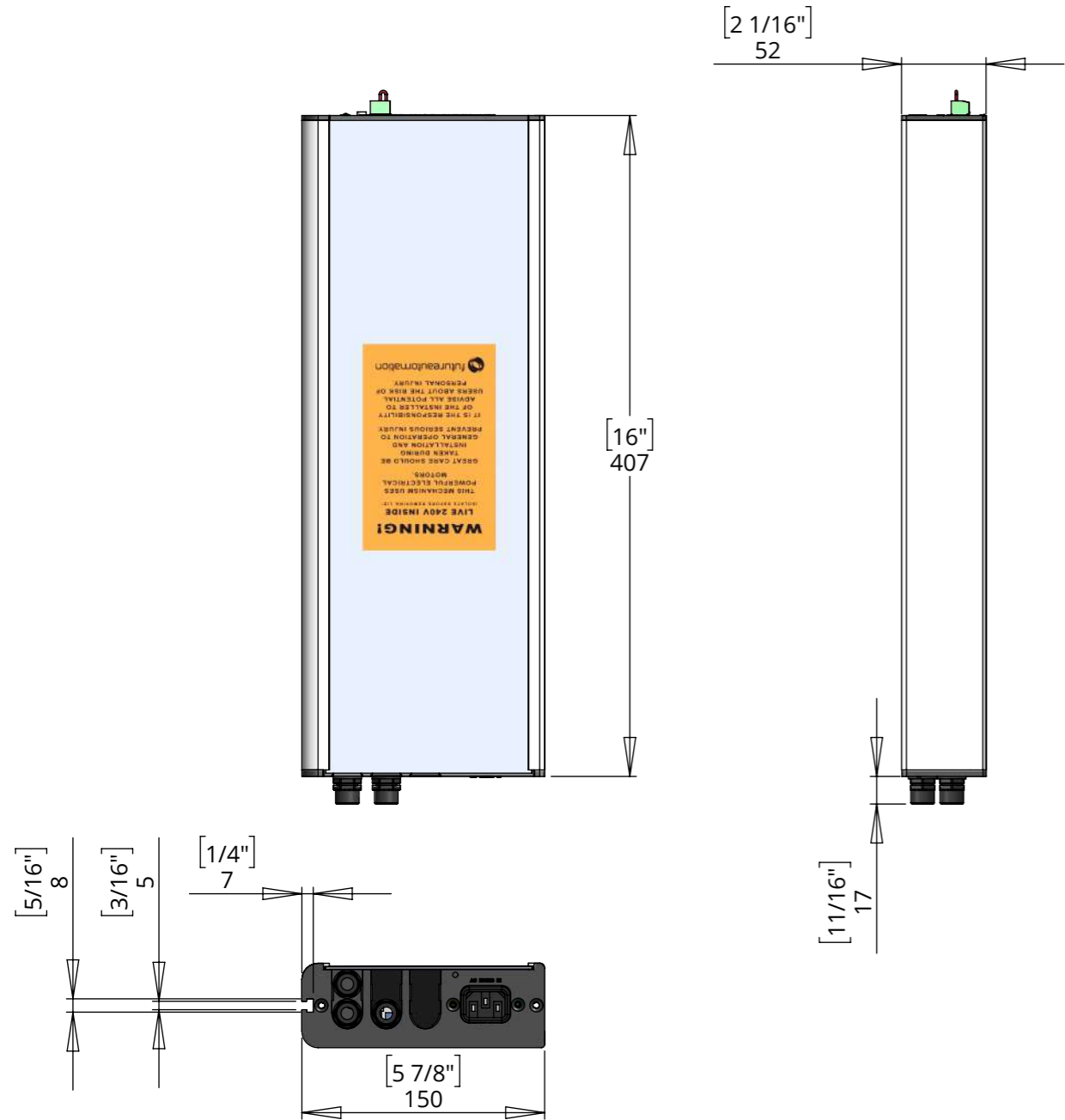


future automation

WISDOM AUDIO SOUNDBAR DROP - FIXED PANEL

CONTROL BOX DETAILS

- Power Supply Unit (PSU) will allow 110V or 240V AC input. The same PSU is used for EU or US mains supplies.
- Other than control cables, all cables terminate at the control board via standard phoenix connectors.
- Cable loom length supplied at approx. 3m [118"']. Loom can be extended to a maximum of approx. 10m [400"'].
 • Minimum cable bend radius 25mm [1"'].
 • Great care should be taken when handling the control box as it contains live electrical components.



4 Cables lead from bracket to control box

AC Mains IN

RS232 PORT

CONTACT CLOSURE PORT

EMERGENCY STOP CONNECTOR

IR LEAD INPUT 3.5mm [0.14"'] JACK

IR OUTPUT INDICATOR LED

